

Scheining PRICES LAB

Rely on Us™

NOVEMBER 2017

kuraray

KATANA™ Zirconia

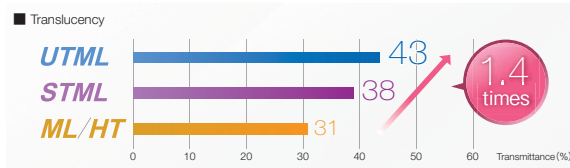
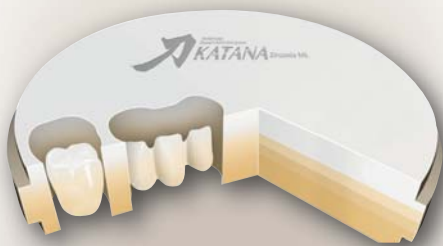
Noritake

STML Super Translucent Multi Layered

STML has a well-balanced combination of translucency and mechanical properties. This version of KATANA™ has gradations of translucency as well as colour, exhibiting a masking effect in the cervical area. Using this series, you can easily obtain the desired shades to accommodate the variety found in prepared tooth conditions of clinical cases.

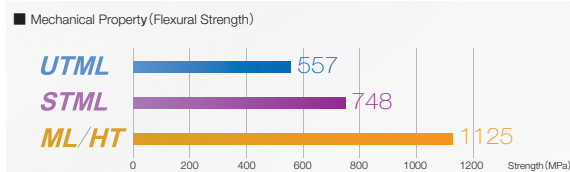
The translucency is 1.4 times more than the conventional zirconia products.

The translucency of zirconia raw materials was increased 1.4 times by our proprietary research and development. Now you can achieve natural life-like translucency with KATANA™ monolithic zirconia materials.



Measurement conditions: Evaluated by raw material (white colour) Wave length of light : 700nm Thickness of sample: 0.5mm
Date source: Kuraray Noritake Dental Inc. The numerical value varies according to a condition

You now have a wide range of clinical case applications for monolithic zirconia with the new additional KATANA™ series.



Measurement conditions: Evaluated by raw material (white colour) According to ISO 6872 : 2015 Sample, A ratio of the distance: 30mm, size: 3x4x40mm
Date source: Kuraray Noritake Dental Inc. The numerical value varies according to a condition

VITA SHADE TAKING SYSTEMS

Easyshade V



Vita Easyshade V is VITA's stand out digital tooth shade determination and communication device. Vita Easyshade V assists with the entire process chain of patient tooth shade determination, from combining shade information with a digital patient photo, to evaluation and application of the data in the fabrication of highly aesthetic restorations, plus quality control of the target shade in the practice.

V-DEASY5

*While stocks last

Classic Shade Guide



The original – for determining tooth shades in the VITA classical A1-D4 shades.

V-CLASSSHGUIDE ONLY \$85.00

3D-MASTER® Toothguide

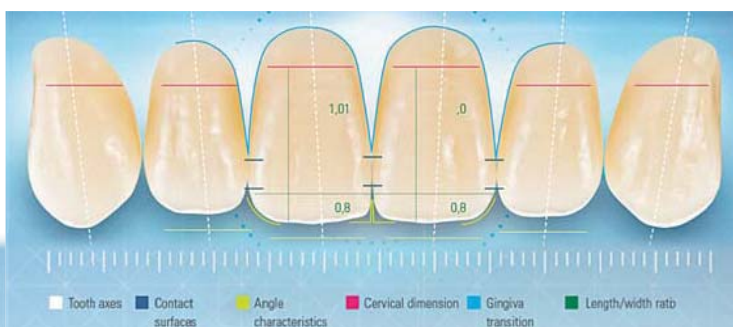


With the VITA Toothguide 3D-MASTER, all natural tooth shades can be determined accurately and systematically.

V-3DSHGUIDE

VITAPAN® EXCELL

Perfect shape. Shade accuracy. Light dynamics.



VITA

WHAT IS VITAPAN® EXCELL?

What?

- VITAPAN EXCELL is a new generation of MRP composite anterior tooth that boasts a brilliant play of shape, shade and light for natural-looking dentures.

What For?

- VITAPAN EXCELL is perfect for highly aesthetic full, partial and implant-retained dentures.

With What?

- VITAPAN EXCELL Anterior and VITAPAN LINGOFORM Posterior are the matched, multifunctional combination for all common occlusal concepts.

CONCEPTS AND INNOVATIONS

Anterior/Posterior Combination

A perfect combination: VITAPAN EXCELL and VITAPAN LINGOFORM

- For the best prosthetics in shape, shade and function
- Universal use in all prosthetic concepts, thanks to multifunctional design

Occlusion Concepts

- For lingual/balanced occlusion concepts: e.g. according to Gysi, Prof. A. Gerber, APF/TIF, ABC

Indications

- Recommended for full and partial dentures
- Recommended for implant-supported dentures

THE PROSTHETIC TOOTH WITH GOLDEN PROPORTIONS

VITAPAN EXCELL allows for:

- Easy replication of the natural symmetry thanks to moulds with a well-balanced length/width ratio
- Convenient reproduction of the tooth position thanks to anterior teeth with "perfectly" aligned tooth axes

Scheining PRICES LAB

HENRY SCHEIN®
CORPORATE BRAND

Model Former



- Available in 8.7 x 6.5cm 8.7 x 6.8cm 10 x 7.7cm

HS-90032_

Wax Rims



**15%
OFF**

Available in -

- Small/Medium (Red) HS-9002528
- Large/Soft (Yellow) HS-9002598
- Large/Hard (Red) HS-9002596

White Nitrile Gloves



**30%
OFF**

200 Gloves per box

- Powder free
- Ambidextrous finger texture
- Beaded cuff
- Sizes: XS-XL

HS-900865_

**While stocks last.*

Glass Beads



**20%
OFF**

- 50 Micron
- 5kg

HS-9003800

Dr Thompson Colour Transfer Applicators

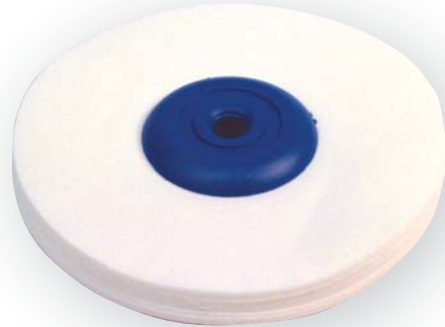


**15%
OFF**

- Dr. Thompson's Color Transfer Applicators are for making colour transfers from irritated areas under full dentures, partials, etc.

HS391-0878

Lathe polishing calico mop



**20%
OFF**

- Blue centre
- Each

HS-9001790

MODELLING WAX



**15%
OFF**

- Summer Wax 1.5mm 2.5kg
- Summer 1.5mm 500g
- Winter 1.5mm 500g

Summer
HS-900151_ 2.5kg
500g

Relining device



**20%
OFF**

- Each

HS-9001679

Lathe Brush



- White
- 48mm

HS-9001714

LiSi Press - pure and simple

100% monolithic LiSi Press. No ceramic layers. No stain.

Finally! A lithium disilicate ceramic that combines unparalleled strength and exceptional aesthetics that technicians demand without being low in value. Best of all, it is faster to process, it is optimised to be used with GC Initial LiSi veneering ceramic, and leaves virtually no reaction layer, making your laboratory more productive.



- Unsurpassed flexural strength (>535 MPa*) with HDM (High Density Micronisation) Technology
- Save up to 20 minutes per restoration
- Unparalleled aesthetics
- Rich, warm, and bright colours with excellent fluorescence
- Virtually no reaction layer when divested

*Data on file.

Scheining PRICES LAB

Rely on Us™

NOVEMBER 2017

GC

initial™ LiSi Press

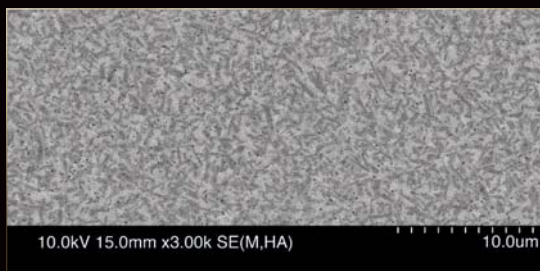
FOR A BEAUTIFUL SMILE!



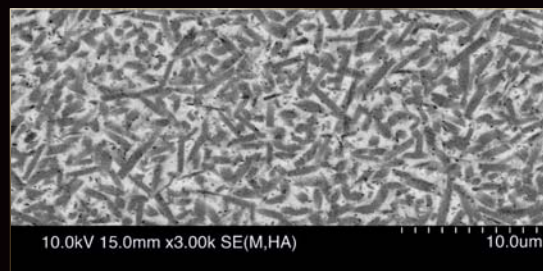
GC Initial™ LiSi Press is the first lithium disilicate ceramic ingot with High Density Micronisation (HDM), a technology unique to GC that provides unsurpassed physical properties and the most natural, lifelike aesthetics of any pressed ceramic option on the market today.

HDM uses equally dispersed lithium disilicate micro-crystals to fill the entire glass matrix rather than using traditional larger size crystals that do not take full advantage of the matrix structure. The result is the ultimate combination of strength and aesthetics, making GC Initial™ LiSi Press perfectly suitable for all types of restoration through all levels of transparency.

GC Initial™ LiSi Press



Standard Lithium Disilicate



Ask for LiSi

WHIPMIX
General Purpose Vibrator

\$30 OFF



- 230V

WM-10655

BEGO
Wirogel M Duplicating
Material for Investment

\$50 OFF



- 6Kg

BO-54351

GC
Diapolisher
Paste

15% OFF



- 1um diamond particle size for the highest gloss finish in one short step

GC-POLISHPASTE

GC
Exaflex VPS
Putty

15% OFF



- 500g Base+
500g Catalyst

GC-5030242

GC
Aroma Fine



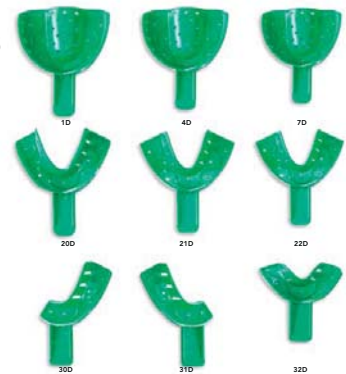
- 1kg Bag

GC-0130F076-00
Normal or Fast Set

BUY GET

**BUY 2 BAGS OF AROMA FINE,
GET 2 BAGS OF IMPRESSION TRAYS**

GC
Impression Trays



- Disposable plastic impression trays
- Pkt 12

COD-SPACER__

BUY GET

BUY 3, GET 1 FREE

MAJAC
Clinidet*

20% OFF



- 5L

MJ-CL5

* Pump not included

BOLLÉ
Bline 13 Safety Glasses

OUR CHEAPEST PRICE!



- Comfortable spec
- Wrap around
- Tilttable
- Adjustable pins
- Anti-scratch and anti-fog coated lenses
- Smoke and Clear Lens

BL-168130_

Scheining PRICES LAB

Rely on Us™

NOVEMBER 2017

KOMET
Tungsten-Carbide
Denture Acrylic Cutting Bur

**\$20
OFF**



TH251ACR104060

KOMET
Vacuum form
acrylic cutter for
bite splints

**\$10
OFF**



- Maximum of 100,000 revolutions per minute
- TH219A104023

VITA
Triluxe Forte
Blocks

**15%
OFF**



- Sizes TF12, TF14 and TF14/14
- Pkt 5

V-EC4_

VERTEX
Modelling Wax Regular

**10%
OFF**



- Regular
- 46 sheets
- 1kg

VX-DVMOD0003

VERTEX
Denture Bags

**10%
OFF**



- Hygienic packaging
- Pkt 50

VX-VDP50

MOLLOPLAST B
Soft Reline Material

**15%
OFF**



- 45g

DK-03000

HYGENIC
Flexible Plaster Bowl

**15%
OFF**



- Sizes: medium, large, x-large & jumbo

HY-056_

UNIDENT
Impression Trays

**10%
OFF**



- S, M & L
- Upper or lower
- Pkt 12

Edentulous
U3-00_

Dentulous
U3-00_

COLTENE WHALEDENT
BioSonic® UC50 Cleaning unit

**15%
OFF**



- 2 litre tank
- Includes basket

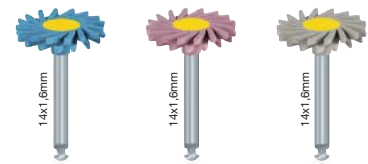
W-UC50DB240

EVE
Diapol Twist Set
RA306

**30%
OFF**



coarse medium fine



- Pkt 6

Item: DT-W14Dg

Item: DT-W14Dmf

Item: DT-W14D

EV-9088

Scheining PRICES LAB

Rely on Us™

NOVEMBER 2017

KAVO Dust Extraction Units

EXTRAmatic 760*

**\$1,800
OFF**



- 3-user unit with brushless motor for **long lasting** durability
- 760mm high x 225mm wide x 600mm deep
- Super efficient self-cleaning system

KV-1-003-3001

SMARTair plus Mobile*

**\$600
OFF**



- Portable, free-standing unit provides for flexibility and premium performance
- 270mm high x 421mm wide x 430mm deep
- With triple-filter quick-change system

KV-1-001-8197

*Indent item

Vertex™ ThermoSens

Vertex Dental

A complete denture base solution!

- Virtually unbreakable
- No volume shrinkage
- Easy to repair
- Monomer free
- Easy and quick to polish
- Low absorbent



For more info: www.vertexthermosens.com

Or ask your Territory Manager at Henry Schein Dental