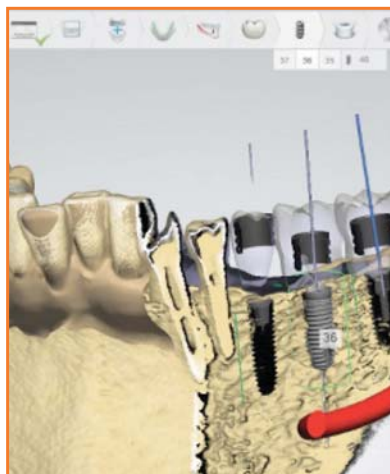




RELY ON US

every smile counts



2017
**SURGICAL
SOLUTIONS**
specialty catalog

Welcome to the Henry Schein Dental Surgical Solutions Catalogue

Page Guide

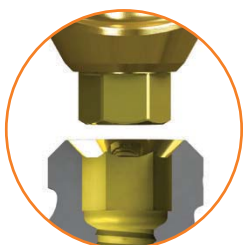
3	IMPLANTS	44	Burs
3	Tapered Implants	45	ANAESTHETIC & PAIN CONTROL
8	Individual Kit Components	45	Local Anaesthetics
9	Ancillary Kits		Ubistesin & Ubistesin Forte
10	Healing Abutments & Cover Caps		Xylestesin
12	PROSTHETIC COMPONENTS		Lidocaine HCl
12	Temporary Abutments		Scandonest, Septonest & Lignospan
13	Impression Components	46	Sedation
15	Patient-Specific Abutments		Hypnovel (Midazolam)
17	Aesthetic & Cementable Abutments	46	Analgesics
18	Multi-Unit Abutments		Penthrox
22	PROSTHETIC INSTRUMENTATION	47	Delivery Systems
24	BONE REGENERATION		STA Wand
24	Bone Regeneration Material	48	Dental Needles & Syringes
	MinerOss® XP		Sharps Disposal
	Mem-Lok® Pliable	49	HANDPIECES & SURGICAL MOTORS
26	Bone Regeneration Instruments	49	Surgical Motors
27	SURGICAL INSTRUMENTS		The Implant Centre 2
27	Bone Cutters & Curettes		EXPERTsurg LUX
28	Elevators		Piezotome Solo
29	Luxators		VarioSurg3
30	Root Picks		Surgic Pro+
31	Extraction Forceps	51	Surgical Handpieces
32	Haemostats & Needle Holders	52	Surgical Lowspeeds
34	Scissors		T-Max
35	Scalpel Handles & Tissue Forceps	53	DETECTION & PLANNING
36	Implantology	53	Digital Imaging
39	ORAL SURGERY		ProMax Digital Range
39	Wound Management		Veraview 3D F40 & 3D R100
	Alveogyl Paste		OP300 3D & Maxio
	Gelatamp		i-CAT FLX
	Spongostan	55	Intraoral Scanning
	Surgicel		TRIOS 3
40	Surgical Sutures		TRIOS Implant Studio
	Henry Schein Sutures		PlanScan
	Ethicon Vicryl & Ethicon Vicryl Rapide Sutures		True Definition Scanner
42	Absorbable Sutures	56	Implant Stability
	Safil & Safil Quick+		IDx
	Monosyn & Monosyn Quick	57	BOOKS

Implants

Tapered Implants

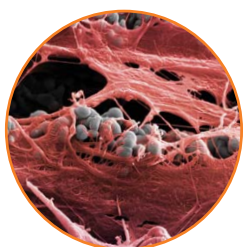
BioHorizons Tapered Implants

The Tapered Internal family of dental implants provide excellent primary stability, maximum bone maintenance and soft tissue attachment for predictable results. All implants can be placed with the same instrument kit giving you surgical convenience and flexibility to choose the ideal implants for each patient's needs.*



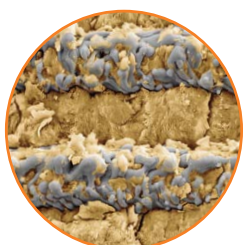
Restorative ease

45° conical internal hex connection creates a robust, biologic seal and is colour-coded for quick identification and component matching.



Connective tissue attachment

Laser-Lok® uniquely creates a physical connective tissue attachment and biologic seal.



Bone attachment

Laser-Lok® microchannels achieve superior osseointegration.



Optimised threadform

Buttress thread engineered for superior stability over microthreaded implants.

*Tapered Plus, Tapered 3.0, Tapered Tissue Level and Tapered Internal.



Universal surgical kit

Intuitive colour-coded instrumentation used to place all BioHorizons Tapered implants.*



BioHorizons Tapered Plus Implants

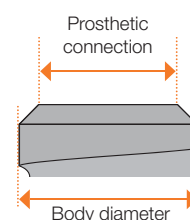
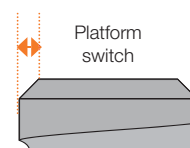
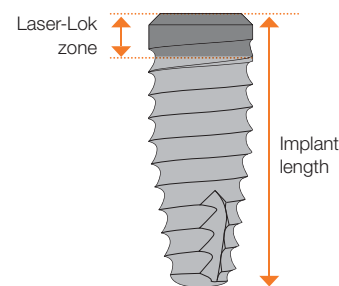
- Dual affinity laser-lok surface provides excellent bone maintenance and soft tissue attachment
- Excellent primary stability from anatomically tapered body
- Compressive bone loading from proprietary buttress threads
- Conical internal hex connection provides a rigid connection and stable biological seal



Tapered Plus Implants

	3.8mm	4.6mm	5.8mm
Body diameter	3.8mm	4.6mm	5.8mm
Prosthetic connection	3.0mm	3.5mm	4.5mm
Laser-Lok zone	1.8mm	1.8mm	1.8mm
Apical diameter	2.8mm	3.1mm	3.9mm
Platform switch	0.4mm	0.5mm	0.6mm
7.5mm length	—	BH-TLXP4607	BH-TLXP5807
9.0mm length	BH-TLXP3809	BH-TLXP4609	BH-TLXP5809
10.5mm length	BH-TLXP3810	BH-TLXP4610	BH-TLXP5810
12.0mm length	BH-TLXP3812	BH-TLXP4612	BH-TLXP5812
15.0mm length	BH-TLXP3815	BH-TLXP4615	BH-TLXP5815

Laser-Lok collar with Resorbable Blast Texturing (RBT) on implant body. Mount-free for quick placement and maximum site visibility. Comes packaged with a Cover Cap. Titanium Alloy (Ti-6Al-4V ELI).



Prosthetic Platform Colour Coding

BioHorizons prosthetic components are colour-coded to match BioHorizons implant prosthetic platforms. To ensure compatibility:

- (1) determine the BioHorizons implant system from the patient's record (e.g. Tapered, Tapered Plus, Tapered Tissue Level)
- (2) verify that the prosthetic component is intended for that system
- (3) match the restorative component colour with the implant prosthetic platform.

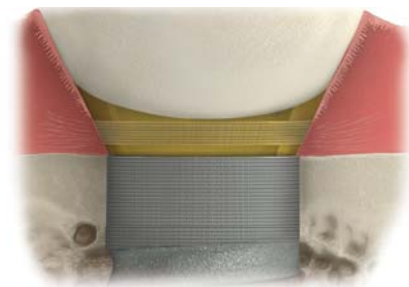
Tapered Internal Plus Implant System

Prosthetic connection	3.0mm	3.5mm	4.5mm
Body diameter	3.8mm	4.6mm	5.8mm

Implants

BioHorizons Tapered Internal Implants

BioHorizons flagship Tapered Internal implants are now available in 5 diameters and 6 lengths, including the new 3.4mm diameter and 18mm lengths. The dual affinity Laser-Lok surface offers flexible implant placement, providing excellent bone maintenance and a stable soft tissue seal. Aggressive buttress threads and anatomically tapered body provide compressive loading and excellent primary stability.



Mount-free Tapered Internal Implants

Body diameter	3.0mm	3.4mm	3.8mm	4.6mm	5.8mm
Prosthetic connection	3.0mm	3.0mm	3.5mm	4.5mm	5.7mm
Laser-Lok zone	2.1mm	1.8mm	1.8mm	1.8mm	1.8mm
Apical diameter	2.0mm	2.4mm	2.8mm	3.1mm	3.9mm
7.5mm length	—	—	—	BH-TLX4607	BH-TLX5807
9.0mm length	—	BH-TLX3409	BH-TLX3809	BH-TLX4609	BH-TLX5809
10.5mm length	BH-TLX3010	BH-TLX3410	BH-TLX3810	BH-TLX4610	BH-TLX5810
12.0mm length	BH-TLX3012	BH-TLX3412	BH-TLX3812	BH-TLX4612	BH-TLX5812
15.0mm length	BH-TLX3015	BH-TLX3415	BH-TLX3815	BH-TLX4615	BH-TLX5815
18.0mm length	—	BH-TLX3418	BH-TLX3818	BH-TLX4618	—

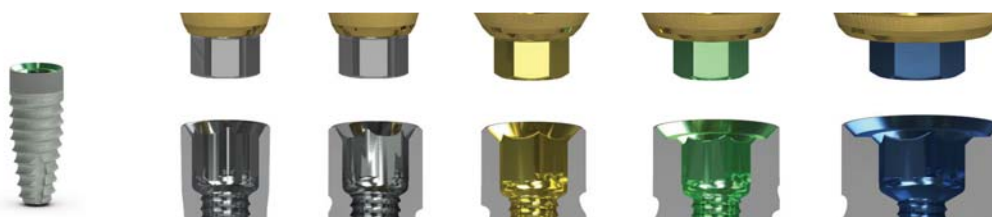
Expanded Laser-Lok zone with no smooth, machined area. Resorbable Blast Texturing (RBT) on implant body. Packaged mount-free for quick placement and maximum site visibility. Comes packaged with a Cover Cap. Titanium Alloy (Ti-6Al-4V ELI).

Prosthetic Platform Colour Coding

BioHorizons prosthetic components are colour-coded to match BioHorizons implant prosthetic platforms. To ensure compatibility:

- (1) determine the BioHorizons implant system from the patient's record (e.g. Tapered, Tapered Plus, Tapered Tissue Level)
- (2) verify that the prosthetic component is intended for that system
- (3) match the restorative component colour with the implant prosthetic platform.

Tapered Internal Implant System




Prosthetic connection	3.0mm	3.0mm	3.5mm	4.5mm	5.7mm
Body diameter	3.0mm	3.4mm	3.8mm	4.6mm	5.8mm

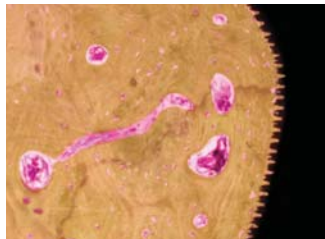
Implants

Laser-Lok collar with Resorbable Blast Texturing (RBT) on implant body. Comes packaged with a Cover Cap, Abutment Screw and pre-mounted 3inOne aesthetic abutment that serves as a fixture mount, closed-tray transfer coping (when used with a ball-top screw) and final abutment. Titanium Alloy (Ti-6Al-4V ELI).

Tapered Internal Implants with 3inOne abutment





			
Body diameter	3.8mm	4.6mm	5.8mm
Prosthetic connection	 3.5mm	 4.5mm	 5.7mm
Laser-Lok zone	1.5mm	1.5mm	1.5mm
Apical diameter	2.8mm	3.1mm	3.9mm
7.5mm length	—	BH-TLR4607	BH-TLR5807
9.0mm length	BH-TLR3809	BH-TLR4609	BH-TLR5809
10.5mm length	BH-TLR3810	BH-TLR4610	BH-TLR5810
12.0mm length	BH-TLR3812	BH-TLR4612	BH-TLR5812
15.0mm length	BH-TLR3815	BH-TLR4615	BH-TLR5815

Laser-Lok surface technology across the entire implant body with no machined collar for faster osseointegration and higher bone to implant contact. Ideal for anatomically challenging conditions. Comes packaged with a Cover Cap. Mount-free delivery. Titanium Alloy (Ti-6Al-4V ELI).



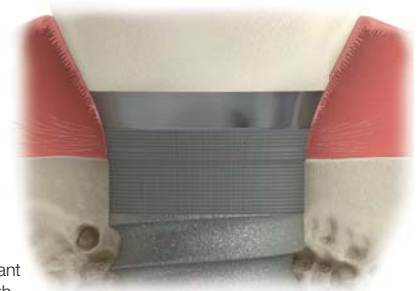
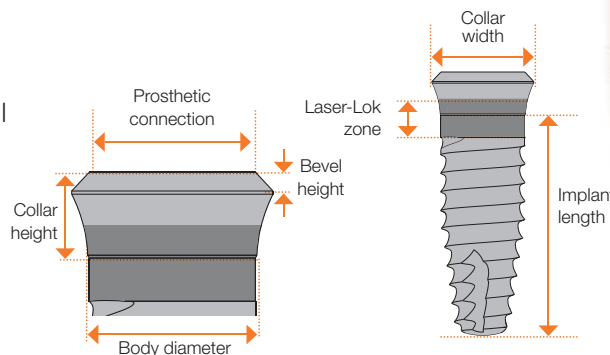
Histology of a buttress thread with Laser-Lok showing exceptional bone attachment.

Tapered Internal Implants with Laser-Lok Complete

		
Body diameter	4.6mm	5.8mm
Prosthetic connection	 4.5mm	 5.7mm
Apical diameter	3.1mm	3.9mm
7.5mm length	BH-TL4607	BH-TL5807
9.0mm length	BH-TL4609	BH-TL5809

BioHorizons Tapered Tissue Level Implants

Tapered Tissue Level implants feature a transmucosal collar for one stage procedures and Laser-Lok surface technology to inhibit epithelial downgrowth, attach connective tissue and create a biologic seal around the implant. Tapered Tissue Level implants are available in 4 diameters including the only 3mm tissue level implants currently available for tight spaces.



Implants

BioHorizons Tapered HD Surgical Kit

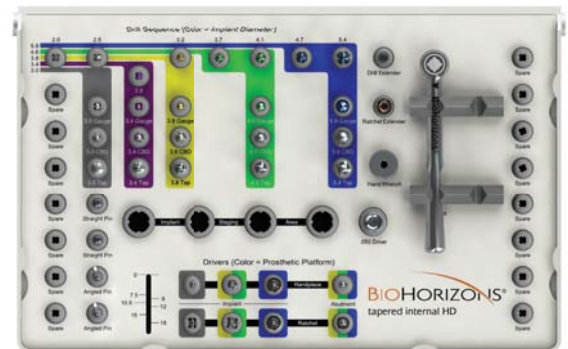
Includes the instrumentation required to place: Tapered Plus, Tapered 3.0, Tapered Tissue Level, Laser-Lok 3.0 & Tapered Internal including the 3.4mm diameter and 18mm lengths.

Features:

- Versatile, removable, hinged lid
- 40% smaller and 40% lighter than other kits
- Easy to disassemble and assemble during cleaning
- Implant staging area for implant vials during surgery
- Use to place tapered plus, tapered internal, tapered tissue level, tapered 3.0 And laser-lok 3.0
- Empty spare slots for other instrumentation such as stop drills or extended shank drills



The surgical kit features an intuitive colour-coded layout that guides the surgeon through the instrument sequence. The drilling section is colour-coded by implant diameter. The implant driver section is colour-coded by prosthetic connection.



BH-TSK4000 Tapered HD Surgical Kit
BH-TSK3500 Tapered HD Surgical Kit (no instruments)

Drill Sequence

3.0mm Body diameter						
3.4mm Body diameter						
3.8mm Body diameter						
4.6mm Body diameter						
5.8mm Body diameter						
	HD Drill Sequence		HD Depth Gauge	HD Crestal Bone Drill (site specific)	HD Bone Tap (site specific)	Implant Driver
	Recommended speed 1,500 - 2,000 RPM			Recommended speed 1,000 RPM	Maximum 30 RPM or use manually	Maximum 30 RPM or use manually

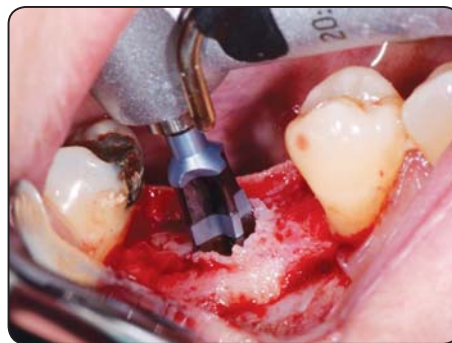
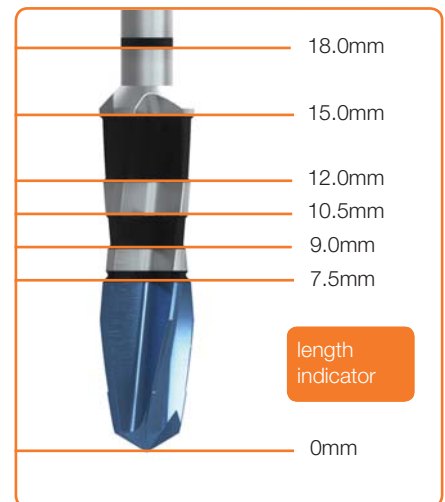
*The 2.8mm drill is used for the 3.4mm diameter implant, it is not needed for other sizes.

Individual Kit Components

BioHorizons HD Drills

Features:

- Cutting flutes designed for maximum efficiency
- Anodised drill tips for easy identification
- Guaranteed corrosion-free
- Non-reflective surface for high visibility
- Simplified drill markings match each implant length
- Compatible with tapered internal, plus, 3.0 And tissue level
- Creates 12-20 osteotomies depending on bone density
- Recommended drill speed 1,500-2,000 rpm (2.0 & 2.5Mm), 1,000 rpm (all others)



- BH-TSD2020HD 2.0mm
- BH-TSD2025HD 2.5mm
- BH-TSD2028HD 2.8mm
- BH-TSD2032HD 3.2mm
- BH-TSD2037HD 3.7mm
- BH-TSD2041HD 4.1mm
- BH-TSD2047HD 4.7mm
- BH-TSD2054HD 5.4mm



Implants

BioHorizons Handpiece Hex Drivers

For installation and removal of cover screws, healing abutments and abutment screws. The handpiece hex drivers are used with latch-type contra-angle handpieces. The Handpiece Hex Driver, Long (134-450) is 5mm longer than the standard version (134-350).



- BH-134-350 .050" (1.25mm) Handpiece Hex Driver
- BH-134-450 .050" (1.25mm) Handpiece Hex Driver, Long

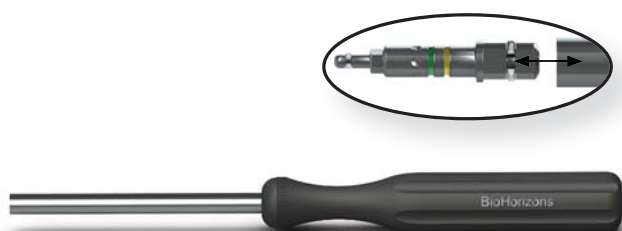
BioHorizons Implant Spacer / Depth Probe



Use to provide intraoral measurements. Multi-functional tool for marking implant spacing on the ridge and probing osteotomy depth.

- BH-144-300 Implant Spacer / Depth Probe

BioHorizons Surgical Driver



Use to drive implants into the osteotomy, particularly in the anterior region. Holds the 4mm Square implant-level drivers and the bone taps.

- BH-150-000 Surgical Driver

ELOS Adjustable Torque Wrench



Lightweight titanium design is easy to use as a ratchet or adjustable torque wrench with visual indicators for 15, 30, 40, 50, 60, 70, 80 and 90 Ncm. Comes packaged with a 4mm square adaptor. Quickly disassembles for cleaning. No calibration required.

- EL-C12374 Elos Adjustable Torque Wrench
- EL-C8521 Elos Replacement Bit, 4mm Square Adaptor
- EL-C8381 Elos Replacement Bit, Handpiece

ITL Adjustable Torque Wrench



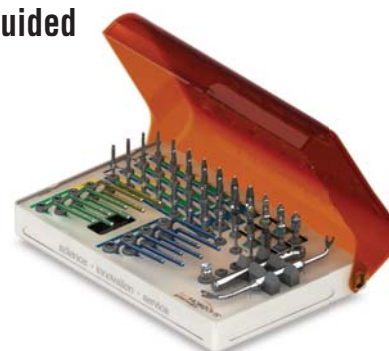
Place both implants and abutments with 9 distinct torque settings (15, 20, 25, 30, 35, 40, 45, 50 and 60 Ncm). A simple twist of the handle locks in precision-engineered torque values and guarantees accuracy and repeatability. Fits any 4mm square component.

- ATW ITL Precise Adjustable Torque Wrench

Ancillary Kits



BioHorizons Guided Surgery Kit



- BH-CGS4000 Guided Surgery Kit (with instruments)

Includes the instrumentation required to place BioHorizons Tapered implants.

Important Note about Guided Surgery Kit

Surgical protocol & guide partners for the CGS4000 can be found at www.biohorizons.com.

Healing Abutments & Cover Caps



BioHorizons Laser-Lok Healing Abutment

Use Laser-Lok healing abutments when a Laser-Lok abutment restoration is planned to inhibit epithelial downgrowth, establish a soft tissue seal and protect the bone. Refer to the Prosthetic Technique Manual (L02015) for appropriate handling techniques.

Y = Yellow (3.5mm) platform

G = Green (4.5mm) platform

B = Blue (5.7mm) platform

N, R or W = Narrow, Regular or Wide emergence

3 or 5 = 3mm or 5mm abutment height

L = Laser-Lok

3.0 healing abutments are not laser marked due to their small size.



	Abutment diameter	3mm height	5mm height
Narrow Emergence			
3.5mm platform, Laser-Lok	4.0mm	BH-PYNHA3L	BH-PYNHA5L
4.5mm platform, Laser-Lok	5.0mm	BH-PGNHA3L	BH-PGNHA5L
5.7mm platform, Laser-Lok	6.0mm	BH-PBNHA3L	BH-PBNHA5L
Regular Emergence			
3.0mm platform, Laser-Lok	3.5mm	BH-TP3HA3L	BH-TP3HA5L
3.5mm platform, Laser-Lok	4.5mm	BH-PYRHA3L	BH-PYRHA5L
4.5mm platform, Laser-Lok	5.5mm	BH-PGRHA3L	BH-PGRHA5L
5.7mm platform, Laser-Lok	6.5mm	BH-PBRHA3L	BH-PBRHA5L
Wide Emergence			
3.0mm platform, Laser-Lok	4.0mm	BH-TP3WHA3L	BH-TP3WHA5L
3.5mm platform, Laser-Lok	6.0mm	BH-PYWHA3L	BH-PYWHA5L
4.5mm platform, Laser-Lok	7.0mm	BH-PGWHA3L	BH-PGWHA5L

BioHorizons Cover Caps

Use during submerged surgical healing. Hand-tighten with the .050" (1.25mm) Hex Driver. Titanium Alloy. Included with implant but can also be ordered separately.

BH-TP3CC 3.0mm
 BH-PYCC 3.5mm
 BH-PGCC 4.5mm
 BH-PBCC 5.7mm



Implants

BioHorizons Laser-Lok Standard Healing Abutment

Hand-tighten with the .050" (1.25mm) Hex Driver. Titanium Alloy. The 3.5, and 4.5mm healing abutments are laser marked for easy intraoral identification of the prosthetic platform, emergence and height:

Y = Yellow (3.5mm) platform

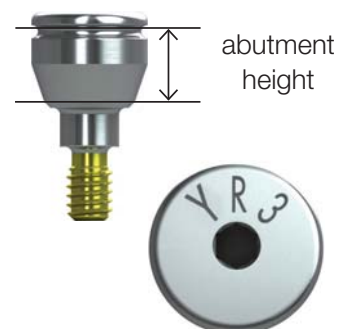
G = Green (4.5mm) platform

B = Blue (5.7mm) platform

N, R or W = Narrow, Regular or Wide emergence

1, 3 or 5 = 1mm, 3mm or 5mm abutment height

3.0 healing abutments are not laser marked due to their small size.



	Abutment diameter	1mm height	3mm height	5mm height
Narrow Emergence				
3.5mm platform	4.0mm	BH-PYNHA1	BH-PYNHA3	BH-PYNHA5
4.5mm platform	5.0mm	BH-PGNHA1	BH-PGNHA3	BH-PGNHA5
5.7mm platform	6.0mm	BH-PBNHA1	BH-PBNHA3	BH-PBNHA5
Regular Emergence				
3.0mm platform	3.5mm	-	BH-TP3HA3	BH-TP3HA5
3.5mm platform	4.5mm	-	BH-PYRHA3	BH-PYRHA5
4.5mm platform	5.5mm	-	BH-PGRHA3	BH-PGRHA5
5.7mm platform	6.5mm	-	BH-PBRHA3	BH-PBRHA5
Wide Emergence				
3.0mm platform	4.0mm	-	BH-TP3WHA3	BH-TP3WHA5
3.5mm platform	6.0mm	-	BH-PYWHA3	BH-PYWHA5
4.5mm platform	7.0mm	-	BH-PGWHA3	BH-PGWHA5

BioHorizons Tapered Offset Dilator Kit

For Tapered Tissue Level implants only. Hand-tighten with the .050" (1.25mm) Hex Driver. Titanium Alloy. Laser marked for easy intraoral identification; for example: SG2: Green (4.5mm) platform /2mm height.



	Abutment diameter	2mm height	3mm height	4mm height
3.5mm platform	5.0mm	BH-SYHA20	BH-SYHA30	BH-SYHA40
4.5mm platform	6.0mm	BH-SGHA20	BH-SGHA30	BH-SGHA40
5.7mm platform	7.5mm	BH-SBHA20	BH-SBHA30	BH-SBHA40

Prosthetic Components

Temporary Abutments



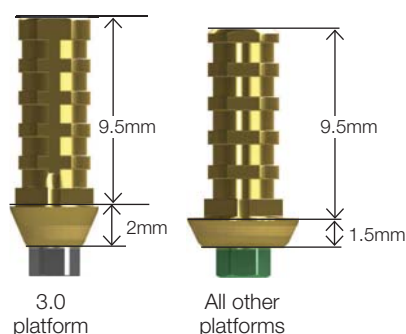
Using authentic BioHorizons parts will ensure a precision fit connection between the prosthetic component and implant, avoiding costly component failures that may occur from using third-party prosthetics. Authentic BioHorizons parts are colour-coded for easy identification to match the mating implant.



Advantages:

- Lifetime warranty on all implants and prosthetics
- Spirallock technology minimises screw loosening
- Precise mating geometries reduce prosthetic failures
- Advanced design creates a better engineered connection
- Colour-coded prosthetic components match implant platforms

BioHorizons Laser-Lok Easy Ti Temp Abutments

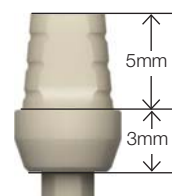


Use hexed for single-unit screw retained, long term temporary restorations that require superior aesthetics (>30 days). Use non-hexed for multiple-unit, screw retained, long term temporary restorations (>30 days). Packaged with an abutment screw (PXAS). Titanium Alloy for strength. TiN coated for aesthetics. Final torque: 30Ncm. Refer to the Prosthetic Technique Manual (L02015) for appropriate handling techniques.

HB-TP3ETHL	3.0mm Platform, Hexed
HB-PYETHL	3.5mm Platform, Hexed
HB-PGETHL	4.5mm Platform, Hexed
HB-PBETHL	5.7mm Platform, Hexed

HB-TP3ETNL	3.0mm Platform, Non-hexed
HB-PYETNL	3.5mm Platform, Non-hexed
HB-PGETNL	4.5mm Platform, Non-hexed
HB-PBETNL	5.7mm Platform, Non-hexed

BioHorizons PEEK Temporary Abutments (Regular Emergence)



Use for fabrication of cement- or screw-retained provisional restorations (up to 30 days). A direct coping screw (PXDCS, purchased separately) may be used to maintain screw access hole during fabrication of screw-retained provisional prostheses. Packaged with an abutment screw (PXAS). PEEK (PolyEtherEtherKetone) material. Final torque: 30Ncm.

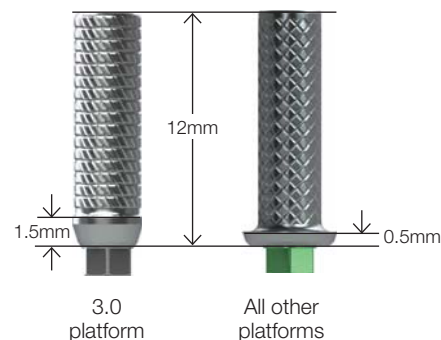
BH-TP3TA	3.0mm Platform
BH-PYRTA	3.5mm platform
BH-PGRTA	4.5mm platform
BH-PBRTA	5.7mm platform

Prosthetic Components

BioHorizons Titanium Temporary Abutments

Use hexed for single-unit, screw-retained, long term temporary restorations (>30 days). Use non-hexed for multiple-unit, screw-retained, long term temporary restorations (>30 days). Packaged with an abutment screw (PXAS). Titanium Alloy. Final torque: 30Ncm.

BH-TP3TTH	3.0mm Platform, Hexed	BH-TP3TTN	3.0mm Platform, Non-Hexed
BH-PYTTH	3.5mm Platform, Hexed	BH-PYTTN	3.5mm Platform, Non-Hexed
BH-PGTTH	4.5mm Platform, Hexed	BH-PGTTN	4.5mm Platform, Non-Hexed
BH-PBTTH	5.7mm Platform, Hexed	BH-PBTTN	5.7mm Platform, Non-Hexed



BioHorizons Two-Piece Custom Temporary Abutments

Use to create an immediate temporary abutment for sculpting the soft tissue. Two-piece Custom Temporary Abutments are offered with Laser-Lok microchannels on the collar to inhibit epithelial downgrowth and establish a biologic soft tissue seal around the abutment. When a Laser-Lok component is used and temporarily removed for impression making or other restorative procedures, keep the removed Laser-Lok component in sterile saline until reinserting into the site. Use included PEEK sleeve to support a temporary prosthesis. Final torque: 30Ncm.

Note: See LQ2015-003 Handling of Laser-Lok Abutments for more information.

	Laser-Lok		Standard	
	1mm Collar	3mm Collar	1mm Collar	3mm Collar
3.0mm Platform	BH-TP3CTA1L	BH-TP3CTA3L	BH-TP3CTA1	BH-TP3CTA3
3.5mm Platform	BH-PYCTA1L	BH-PYCTA3L	BH-PYCTA1	BH-PYCTA3
4.5mm Platform	BH-PGCTA1L	BH-PGCTA3L	BH-PGCTA1	BH-PGCTA3



Impression Components

BioHorizons Snap Copings

Use to make a closed-tray, direct pick-up, implant-level impression. PEEK (PolyEtherEtherKetone) and Titanium Alloy material.

BH-TP3RSC	3.0mm Platform (Regular Emergence)
BH-TP3WSC	3.0mm Platform (Wide Emergence)
BH-PYNCS	3.5mm Platform (Narrow Emergence)
BH-PYRSC	3.5mm Platform (Regular Emergence)
BH-PYWCS	3.5mm Platform (Wide Emergence)
BH-PGNCS	4.5mm Platform (Narrow Emergence)
BH-PGRSC	4.5mm Platform (Regular Emergence)
BH-PGWCS	4.5mm Platform (Wide Emergence)
BH-PBNCS	5.7mm Platform (Narrow Emergence)
BH-PBRSC	5.7mm Platform (Regular Emergence)



BIOHORIZONS[®]
SCIENCE • INNOVATION • SERVICE

Prosthetic Components

BioHorizons In-Direct Pick-up Copings (Closed Tray)

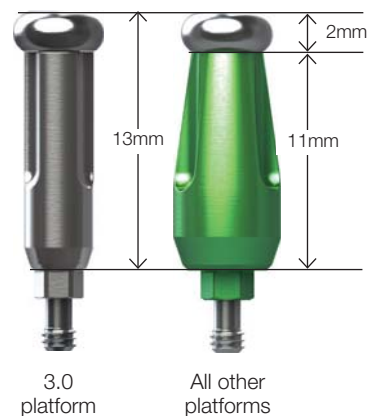
Use to make a closed-tray, implant-level, hexed-timed impression. Pre-assembled with a coping screw (PXSS). Titanium Alloy.

BH-TP3ISC 3.0mm Platform (Regular Emergence)
 BH-TP3WISC 3.0mm Platform (Wide Emergence)

BH-PYNISC 3.5mm Platform (Narrow Emergence)
 BH-PYRISC 3.5mm Platform (Regular Emergence)
 BH-PYWISC 3.5mm Platform (Wide Emergence)

BH-PGNISC 4.5mm Platform (Narrow Emergence)
 BH-PGRISC 4.5mm Platform (Regular Emergence)
 BH-PGWISC 4.5mm Platform (Wide Emergence)

BH-PBNISC 5.7mm Platform (Narrow Emergence)
 BH-PBRISC 5.7mm Platform (Regular Emergence)



BioHorizons Direct Pick-up Copings (Open Tray)

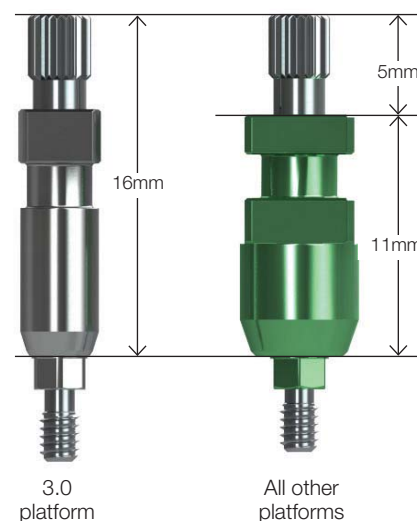
Use to make an open-tray, implant-level impression. Packaged with the direct coping screw, shallow hex (PXDCSS). Non-hexed versions may also be used to fabricate multiple-unit bars. Titanium Alloy. Hand-tighten.

BH-TP3DC 3.0mm Platform, Hexed (Regular Emergence)
 BH-TP3DCN 3.0mm Platform, Non-Hexed (Regular Emergence)

BH-PYND 3.5mm Platform, Hexed (Narrow Emergence)
 BH-PYND 3.5mm Platform, Non-Hexed (Narrow Emergence)
 BH-PYRDC 3.5mm Platform, Hexed (Regular Emergence)
 BH-PYWDC 3.5mm Platform, Hexed (Wide Emergence)

BH-PGNDC 4.5mm Platform, Hexed (Narrow Emergence)
 BH-PGNDCN 4.5mm Platform, Non-Hexed (Narrow Emergence)
 BH-PGRDC 4.5mm Platform, Hexed (Regular Emergence)
 BH-PGWDC 4.5mm Platform, Hexed (Wide Emergence)

BH-PBNDC 5.7mm Platform, Hexed (Narrow Emergence)
 BH-PBNDCN 5.7mm Platform, Non-Hexed (Narrow Emergence)
 BH-PBRDC 5.7mm Platform, Hexed (Regular Emergence)



Prosthetic Components

BioHorizons Implant Analogs

Use in the lab to represent the implant in the working cast. Not intended for use with Simple Solutions components or tissue-level implants. Titanium Alloy.



BH-TP3IA 3.0mm Platform
BH-PYIA 3.5mm Platform

BH-PGIA 4.5mm Platform
BH-PBIA 5.7mm Platform

BioHorizons Abutment Screw

Fits all implant prosthetic platforms. Low profile screw head. Packaged with all two-piece abutments, except 3.0mm. Custom Ti abutment and Angled Multi-unit abutments that are packaged with the PXMUAS. Utilises the .050" (1.25mm) Hex Driver. Titanium Alloy. Final torque: 30 Ncm.



PXAS Abutment Screw
PXAS25 Abutment Screw (Pack of 25)

BioHorizons Ball-Top Screw for Indirect (Closed Tray) Transfer

Use with the 3inOne Abutment to form an impression coping for closed-tray, hexed-timed transfers. Hand-tighten. Titanium Alloy.



BH-PXBT Ball-Top Screw for Indirect Transfer

BioHorizons Peek Scan Abutments

Use for table top or intra-oral scanning. May also be used for fabrication of cement or screw-retained provisional restorations (up to 30 days). Packaged with an abutment screw (PXAS). PEEK (PolyEtherEtherKetone) material. Final torque: 30Ncm.

Note: Prior to scanning, verify that the scan abutment is available in the library of the design software that will be used to design the abutment.



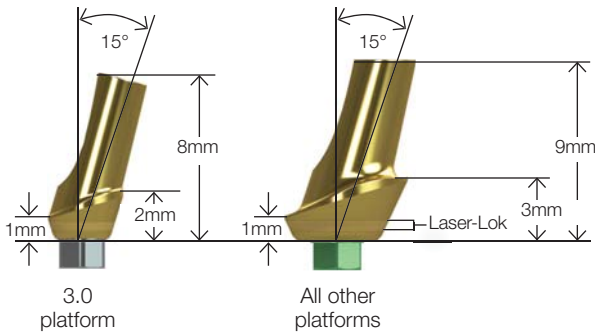
BH-TP3PSA 3.0mm Platform
BH-PYPSA 3.5mm Platform
BH-PGPSA 4.5mm Platform
BH-PGPSA 5.7mm Platform

Prosthetic Components

Aesthetic & Cementable Abutments



BioHorizons Angled Aesthetic Abutments

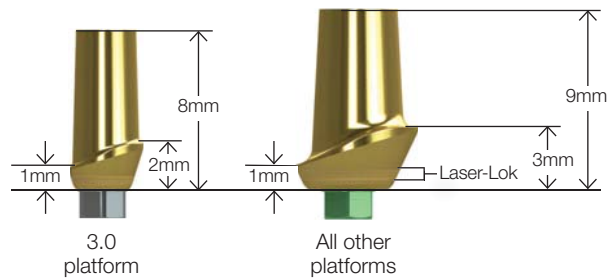


Use to create a cement-retained, single or multiple-unit prostheses. When a Laser-Lok component is used and temporarily removed, keep the component in sterile saline until reinserting into the site. Packaged with an abutment screw (PXAS). Titanium Alloy. TiN coated for aesthetics. Final torque: 30Ncm.

Note: See L02015-003 Handling of Laser-Lok Abutments for more information.

	Laser-Lok	Standard
3.0mm Platform	BH-TP3AEAL	BH-TP3AEA
3.5mm Platform	BH-PYAEAL	BH-PYAEA
4.5mm Platform	BH-PGAEAL	BH-PGAEA
5.7mm Platform	BH-PBAEAL	BH-PBAEA

BioHorizons Straight Aesthetic Abutments



Use to fabricate cement-retained, single or multiple-unit prostheses. When a Laser-Lok component is used and temporarily removed, keep the component in sterile saline until reinserting into the site. Packaged with an abutment screw (PXAS). Titanium Alloy. TiN coated for aesthetics. Final torque: 30Ncm.

Note: See L02015-003 Handling of Laser-Lok Abutments for more information.

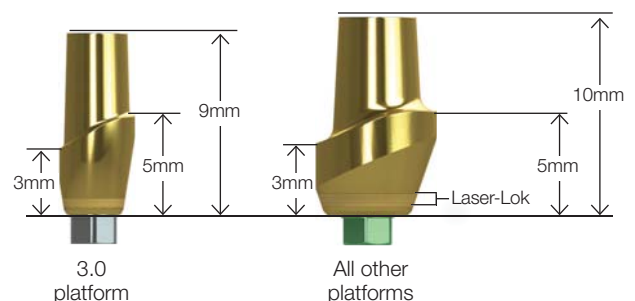
	Laser-Lok	Standard
3.0mm Platform	BH-TP3SEAL	BH-TP3SEA
3.5mm Platform	BH-PYSEAL	BH-PYSEA
4.5mm Platform	BH-PGSEAL	BH-PGSEA
5.7mm Platform	BH-PBSEAL	BH-PBSEA

BioHorizons Straight Aesthetic Abutments (3mm Buccal Height)

Use to fabricate cement-retained, single or multiple-unit prostheses when a deep gingival sulcus is present. When a Laser-Lok component is used and temporarily removed, keep the component in sterile saline until reinserting into the site. Packaged with an abutment screw (PXAS). Titanium Alloy. TiN coated for aesthetics. Final torque: 30Ncm.

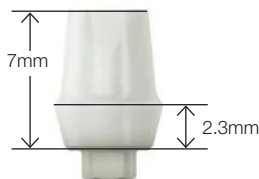
Note: See L02015-003 Handling of Laser-Lok Abutments for more information.

	Laser-Lok	Standard
3.0mm Platform	BH-TP3SEA3L	BH-TP3SEA3
3.5mm Platform	BH-PYSEA3L	BH-PYSEA3
4.5mm Platform	BH-PGSEA3L	BH-PGSEA3
5.7mm Platform	BH-PBSEA3L	BH-PBSEA3



Prosthetic Components

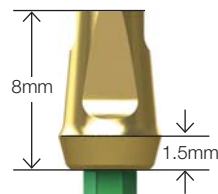
BioHorizons Ceramic Abutments (Regular Emergence)



Use to fabricate cement-retained, single or multiple-unit prostheses. Indicated for anterior, aesthetic zone. Packaged with an abutment screw (PXAS). Yttria-stabilised Zirconia. Final torque: 30Ncm.

BH-PYRCA	3.5mm Platform
PGRCA	4.5mm Platform
PBRCA	5.7mm Platform

BioHorizons 3 in One Abutments (Regular Emergence)

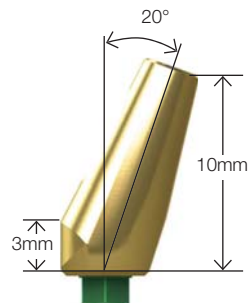


Use to fabricate cement-retained, single or multiple-unit prostheses. Also used with a Ball-top Screw for a closed-tray, hex-timed transfer. Packaged with an abutment screw (PXAS). Titanium Alloy. TiN coated for aesthetics. Final torque: 30Ncm.

BH-PYREA	3.5mm Platform
BH-PGREA	4.5mm Platform
BH-PBREA	5.7mm Platform

BioHorizons Angled Abutments (Regular Emergence)

Use to fabricate cement-retained, single or multiple-unit prostheses. Packaged with an abutment screw (PXAS). Titanium Alloy. TiN coated for aesthetics. Final torque: 30Ncm.

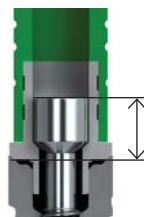


BH-PYRAA	3.5mm Platform
BH-PGRAA	4.5mm Platform
BH-PBRAA	5.7mm Platform

Note



For cement-retained restorations, maintain at least 4mm of chimney height from the margin for optimal cement retention.



For screw-retained restorations, maintain at least 3mm from the abutment platform to avoid damaging the abutment screw.

Prosthetic Components

Locator Abutments

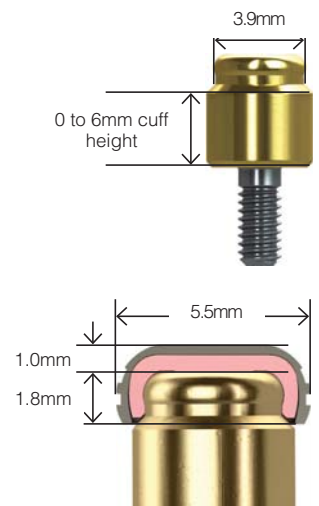


BioHorizons Locator Implant Attachments

Locator Implant Attachments are designed for use with overdentures or partial dentures retained in whole or in part by dental implants in the mandible or maxilla. Order by cuff height to match the height of the gingival tissue. The abutment will extend above the tissue by 1.8mm to allow the Locator Male to seat completely. Order one Locator Male Processing Set for each Locator Abutment (sold in packs of 2 or 10). Can also be used with tissue-level implants. Titanium Alloy.

The Male Processing Package provides 3 choices of retention. The Replacement Males (clear, pink and blue) are used to restore implants with up to 10° of divergence (20° between implants). The Extended Range Replacement Males (green and red) accommodate divergences from 10° and 20° (40° between implants), and may be purchased separately.

	3.0mm Platform	3.5mm Platform	4.5mm Platform	5.7mm Platform
0mm Cuff Height	Not Available	BH-PYLA0	BH-PGLA0	Not Available
1mm Cuff Height	BH-TP3LA1	BH-PYLA1	BH-PGLA1	BH-PBLA1
2mm Cuff Height	BH-TP3LA2	BH-PYLA2 (2.5mm)	BH-PGLA2	BH-PBLA2
3mm Cuff Height	BH-TP3LA3	BH-PYLA3 (3.5mm)	BH-PGLA3	BH-PBLA3
4mm Cuff Height	BH-TP3LA4	BH-PYLA4 (4.5mm)	BH-PGLA4	BH-PBLA4
5mm Cuff Height	BH-TP3LA5	BH-PYLA5 (5.5mm)	BH-PGLA5	BH-PBLA5
6mm Cuff Height	BH-TP3LA6	BH-PYLA6 (6.5mm)	BH-PGLA6	BH-PBLA6



BioHorizons Denture Caps

Male Processing Package (2 Pack) Includes: (2) Denture Caps Assembled with Black Processing Males; (2) White Block-out Spacers; (2) Clear, (2) Pink and (2) Blue Nylon Males.



BH-LMPP-2 Pack of 2

BioHorizons Female Analog

Use for 3.0, 3.5 and 4.5 platforms

BH-LFA-4MM Female Analog 4mm (4 Pack)

Use for 5.7 platform

BH-LFA-5MM Female Analog 5mm (4 Pack)



BioHorizons Square Drive Tool

Use with a torque wrench to seat Locator Abutments.

BH-LSDT-15MM Square Drive Tool (15mm Length)

Use with a torque wrench to seat Locator Abutments.

BH-LSDT-21MM Square Drive Tool (21mm Length)



BioHorizons Impression Coping

BH-BHLIC Impression Coping (4 Pack)



BioHorizons Parallel Post

BH-LPP Parallel Post (4 Pack)



BioHorizons Angle Measurement Guide



BH-LAMG Angle Measurement Guide

Prosthetic Components

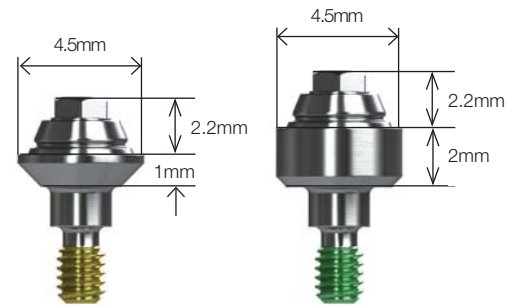
Multi-Unit Abutments



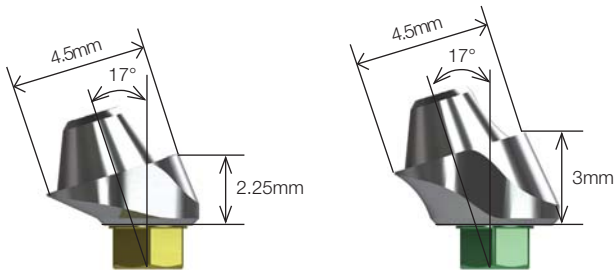
BioHorizons Straight Multi-Unit Abutments

Straight Multi-unit abutments may be used for multiple-unit restorations including: screw-retained restorations at the abutment level, cast alloy bars for overdentures and fixed/detachable (hybrid) restorations. Comes with a cover cap (PXMUCC). Final torque: 30 Ncm using a Multi-unit Hex Adapter. Titanium alloy.

	1mm Collar	2mm Collar	3mm Collar	4mm Collar	5mm Collar
3.0mm Platform	BH-TP3MU1	BH-TP3MU2	BH-TP3MU3	-	-
3.5mm Platform	BH-PYMU1	BH-PYMU2	BH-PYMU3	BH-PYMU4	BH-PYMU5
4.5mm Platform	BH-PGMU1	BH-PGMU2	BH-PGMU3	BH-PGMU4	BH-PGMU5
5.7mm Platform	BH-PBMU1	BH-PBMU2	BH-PBMU3	-	-



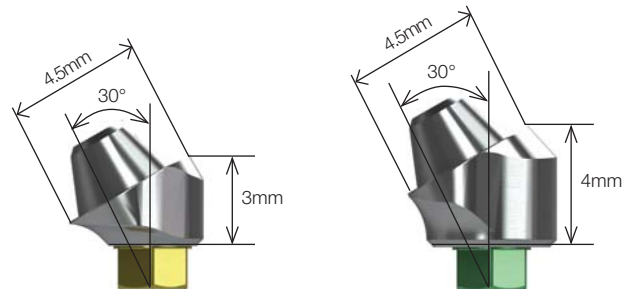
BioHorizons 17° Angled Multi-Unit Abutments



17° Angled Multi-unit abutments may be used to angle-correct divergent implants. Use for multiple-unit restorations including: screw-retained restorations at the abutment level, cast alloy bars for overdentures and fixed/detachable (hybrid) restorations. Comes with a cover cap (PXMUCC) and abutment screw (PXMUAS). Final torque: 30 Ncm. Titanium alloy. Conveniently deliver abutment one-handed using an .050 hex or Unigrip™ driver or two-handed using an angled Multi-unit carrier (MUCA).

	2.25mm Collar	3mm Collar	4mm Collar
3.0mm Platform	BH-TP3MU172	BH-TP3MU173	-
3.5mm Platform	BH-PYMU172	BH-PYMU173	BH-PYMU174
4.5mm Platform	BH-PGMU172	BH-PGMU173	BH-PGMU174

BioHorizons 30° Angled Multi-Unit Abutments



30° Angled Multi-unit abutments may be used to angle-correct divergent implants. Use for multiple-unit restorations including: screw-retained restorations at the abutment level, cast alloy bars for overdentures and fixed/detachable (hybrid) restorations. Comes with a cover cap (PXMUCC) and abutment screw (PXMUAS). Final torque: 30 Ncm. Titanium alloy. Conveniently deliver abutment one-handed using an .050 hex or Unigrip™ driver or two-handed using an angled Multi-unit carrier (MUCA).

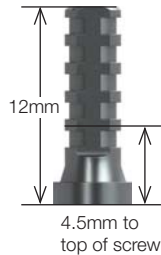
	3mm Collar	4mm Collar	5mm Collar
3.0mm Platform	BH-TP3MU303*	BH-TP3MU304*	-
3.5mm Platform	BH-PYMU303	BH-PYMU304	BH-PYMU305
4.5mm Platform	BH-PGMU303	BH-PGMU304	BH-PGMU305

Prosthetic Components

BioHorizons Multi-Unit Copings

Titanium

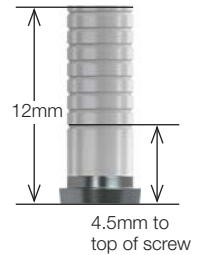
Use for fabricating acrylic temporary and final prostheses. May be trimmed for height. Packaged with prosthetic screw (PXMUPSR). Titanium alloy.



BH-PXMUTC

Gold Custom Castable

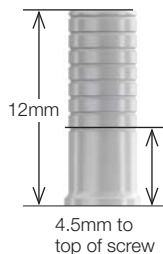
Use for fabricating metal-reinforced acrylic prostheses or bar overdentures. May be trimmed for height. Packaged with prosthetic screw (PXMUPSR). Coping has a gold alloy base with acetal resin (Delrin or Pomalux) sleeve.



BH-PXMUGC

Plastic Custom Castable

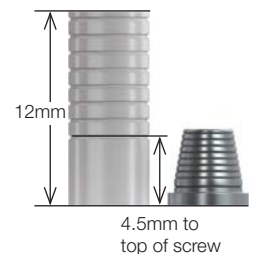
Use for fabricating metal-reinforced acrylic prostheses or bar overdentures. May be trimmed for height. Packaged with prosthetic screw (PXMUPSR). Acetal resin (Delrin or Pomalux).



BH-PXMUPC

Passive Fit

Use for fabricating metal-reinforced acrylic prostheses or bar overdentures, cemented using the passive-fit technique. May be trimmed for height. Packaged with regular and long prosthetic screws (PXMUPSR, PXMUPSL). Coping has a titanium alloy base with acetal resin (Delrin or Pomalux) sleeve.



BH-PXMUPFC

BioHorizons Multi-Unit Locators

Locator attachments for multi-unit abutments have been designed as a free-standing option (LMUTC) for the angled multi-unit posterior sites and for castable bar-splinted applications (LMUDC). The Locator Multi-unit Bar Processing Package includes Denture Cap with Yellow Bar Processing Male, Dual Retentive Replacement Males: Clear, Pink, Blue, and Block-Out Spacer. Offered in 2 packs and 10 packs. For complete instructions, visit the Zest Anchors web site.

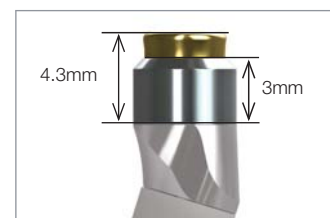
BH-LMUTC-2 Locator Multi-Unit Abutment w/ Ti Collar (2 Pack)
BH-LMUTC-10 Locator Multi-Unit Abutment w/ Ti Collar (10 Pack)

Use Male Processing Package for these collars (BH-LMPP-2 or BH-LMPP-10).

BH-LMUDC-2 Locator Multi-Unit Abutment w/ Delrin Collar (2 Pack)
BH-LMUDC-10 Locator Multi-Unit Abutment w/ Delrin Collar (10 Pack)

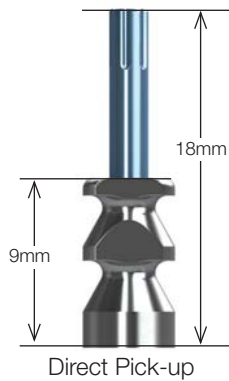
Use Locator Multi-unit Bar Processing Package listed below for these collars.

BH-LMUBPP-2 Locator Multi-Unit Bar Processing Package (2 Pack)
BH-LMUBPP-10 Locator Multi-Unit Bar Processing Package (10 Pack)



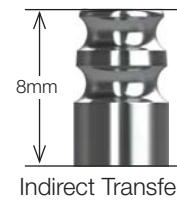
Prosthetic Components

BioHorizons Multi-Unit Impression Copings



Use to make a direct pick-up impression (open-tray) at the abutment level. Packaged with a prosthetic screw, long (PXMUPSL). Titanium alloy. Hand tighten.

BH-PXMUDC Direct Pick-up Coping, Multi-Unit



Use to make an indirect transfer (closed-tray) impression at the abutment level. Titanium alloy. Hand tighten.

BH-PXMUIC Indirect Transfer Coping, Multi-Unit

BioHorizons Multi-Unit Cover Cap



Packaged with all Multi-unit abutments. Hand-tighten with .050" (1.25mm) Hex Driver or Unigrip™ screw driver. Titanium alloy.

BH-PXMUCC Cover Cap, Multi-Unit

BioHorizons Multi-Unit Abutments Replica & Protection Analog



Use at lab to represent the Multi-unit/Implant assembly in the working cast. Not for use with implant-level impressions. Titanium alloy.

BH-PXMUAR Abutment Replica, Multi-Unit
BH-PXMUPA Protection Analog, Multi-Unit (Pack of 5)

Prosthetic Components

BioHorizons Multi-Unit Try-in Abutments

Multi-unit Try-in Abutments may be used to measure tissue thickness and verify proper prosthetic seating prior to final abutment seating. Each Try-in is laser marked from 1mm to 5mm to correspond with the Straight Multi-unit Abutment collar heights and can also be used as a measuring tool for other abutment types. Try-in can be carried to the site by hand or with an .050" hex driver and snaps into the implant.

BH-TRYTP3MU 3.0mm Multi-Unit Try-in Straight Abutment
 BH-TRYPYMU 3.5mm Multi-Unit Try-in Straight Abutment
 BH-TRYPGMU 4.5mm Multi-Unit Try-in Straight Abutment
 BH-TRYPBMU 5.7mm Multi-Unit Try-in Straight Abutment

BH-TRYTP3MU17* 3.0mm Multi-Unit Try-in 17° Angled Abutment
 BH-TRYPYMU17* 3.5mm Multi-Unit Try-in 17° Angled Abutment
 BH-TRYPGMU17* 4.5mm Multi-Unit Try-in 17° Angled Abutment

BH-TRYTP3MU30* 3.0mm Multi-Unit Try-in 30° Angled Abutment
 BH-TRYPYMU30* 3.5mm Multi-Unit Try-in 30° Angled Abutment
 BH-TRYPGMU30* 4.5mm Multi-Unit Try-in 30° Angled Abutment

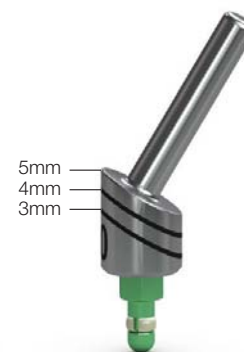
Each Try-in is laser marked to correspond with the Angled Multi-unit Abutment collar heights. Try-in is carried to the site by the handle and snaps into the implant.



Straight abutment
Laser marking



17° Angled Abutment
Laser marking



30° Angled Abutment
Laser marking

BioHorizons Multi-Unit Hex Adapters for Straight Abutments

Use to hand tighten straight Multi-unit abutments.

BH-PXMUHAM Manual Multi-Unit Hex Adapter

Use to torque straight Multi-unit abutments. Driven by latch-type handpiece. Do not exceed 30 Ncm.

BH-PXMUHAH Handpiece Multi-Unit Hex Adapter

Use to torque straight Multi-unit abutments. Driven by 4mm square drive handwrench, ratchet, or torque wrench. Do not exceed 30 Ncm.

BH-PXMUHAR 4mm Square Multi-Unit Hex Adapter



Manual



Handpiece



4mm Square

Prosthetic Instrumentation



BioHorizons Enhanced Prosthetic Instrumentation Kit

Use for retention of tissue-supported overdentures. Ball Abutments may be used for indirect transfer impressions. Ball Abutment Analogs on facing page are used for producing a working cast. Can also be used with tissue-level implants. Titanium Alloy.

Kit includes:

- .050 (1.25mm) Manual Hex Driver
- .050 (1.25mm) Manual Hex Driver, Long
- .050 (1.25mm) Handpiece Hex Driver
- .050 (1.25mm) Handpiece Hex Driver, Long
- .050 (1.25mm) 4mm Square Hex Driver
- .050 (1.25mm) 4mm Square Hex Driver, Long
- Hand Wrench
- 4mm Square Drive Extender
- 4mm Square Multi-unit Hex Adapter
- 12 Try-in Abutment Slots (Try-in Abutments available soon)
- 8 Optional Instrument Slots
- Space for Torque Wrenches & AS123 Hand Unit



BH-PROS3000

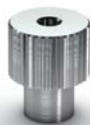
BioHorizons AS123 Hand Unit



Provides improved vision and easy access to prosthetic components in posterior regions of the mouth. Hand Wrench and Drivers are sold separately.

BH-300-100

BioHorizons Hand Wrench



Use on drive end of AS123 Hand Unit. Also fits individual Hex Drivers/Adapters and Bone Taps.

BH-300-400*

BioHorizons Prosthetic Instrumentation Tray

Prosthetic Instrumentation Tray (not shown). Tray without instruments (included with PROS3000 above).

BH-PROS2500

BioHorizons Square Drive Extender



Replaced 300-205 starting in June 2010. Includes PEEK C-ring for durable retention in Ratchet. Cannot be used with bone taps.

BH-300-206* 4mm

* Instrument o-rings & c-rings wear out over time. If an instrument is no longer held securely by its associated driver, order a replacement ring through Customer Care.

Prosthetic Instrumentation

ELOS Adjustable Torque Wrench



Lightweight titanium design is easy to use as a ratchet or adjustable torque wrench with visual indicators for 15, 30, 40, 50, 60, 70, 80 and 90 Ncm. Comes packaged with a 4mm square adaptor. Quickly disassembles for cleaning. No calibration required.

- EL-C12374 Elos Adjustable Torque Wrench
- EL-C8521 Elos Replacement Bit, 4mm Square Adaptor
- EL-C8381 Elos Replacement Bit, Handpiece

ITL Adjustable Torque Wrench



Place both implants and abutments with 9 distinct torque settings (15, 20, 25, 30, 35, 40, 45, 50 and 60 Ncm). A simple twist of the handle locks in precision-engineered torque values and guarantees accuracy and repeatability. Fits any 4mm square component.

- ATW ITL Precise Adjustable Torque Wrench

BioHorizons Hex Drivers .050 (1.25mm)



For installation and removal of cover caps, prosthetic and abutment screws.

- BH-135-351 Manual Hex Driver
- BH-135-451 Manual Hex Driver, Long
- BH-134-350 Handpiece Hex Driver
- BH-134-450 Handpiece Hex Driver, Long
- BH-300-350* 4mm Square Hex Driver
- BH-300-351* 4mm Square Hex Driver, Long
- BH-300-354* 4mm Square Hex Driver, Extra Long

BioHorizons Ball Abutment Inserts Clean-Out Tap Tools



Use PXCT to re-thread internal connection implants (Tapered Internal, Internal, Laser-Lok 3.0, Tapered Tissue Level and Single-stage), and 122-170 to re-thread Abutment for Screw abutments where the internal threads have become damaged. Requires a standard surgical Ratchet (130-000) or Hand Wrench (300-400) as a drive mechanism.

- BH-PXCT* Implant Clean-Out Tap Tool
- Abutment for Screw Clean-Out Tap Tool

* Instrument o-rings & c-rings wear out over time. If an instrument is no longer held securely by its associated driver, order a replacement ring through Customer Care.

Bone Regeneration

Bone Regeneration Material

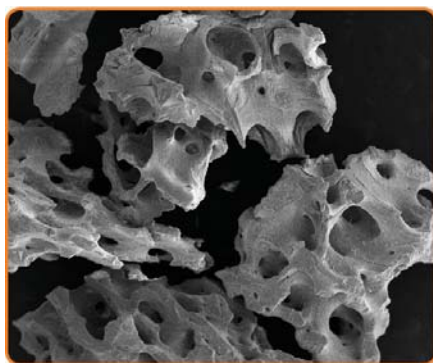


BioHorizons MinerOss® XP

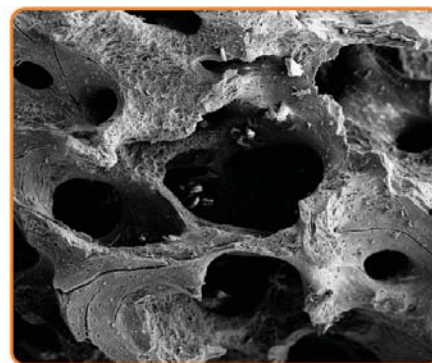
MinerOss XP is a highly porous anorganic porcine bone mineral matrix designed for hard tissue grafting applications. Increased porosity allows for optimal osteoconductivity and adequate space for new bone deposition.

Applications include:

- Ridge and sinus augmentation
- Extraction socket grafting
- Infrabony periodontal defects
- Grafting for implant placement



SEM at 25x



SEM at 75x

BH-MINXPCAN0.5SM	MinerOss XP Cancellous 0.5cc	0.25 - 1mm
BH-MINXPCAN1.0SM	MinerOss XP Cancellous 1.0cc	0.25 - 1mm
BH-MINXPCAN1.0LG	MinerOss XP Cancellous 1.0cc	1 - 2mm
BH-MINXPCAN2.0SM	MinerOss XP Cancellous 2.0cc	0.25 - 1mm
BH-MINXPCAN2.0LG	MinerOss XP Cancellous 2.0cc	1 - 2mm
BH-MINXPCAN4.0SM	MinerOss XP Cancellous 4.0cc	0.25 - 1mm

Bone Regeneration

BioHorizons Mem-Lok® Pliable

Mem-Lok® Pliable is a strong, conformable collagen barrier membrane manufactured from highly purified porcine tissue.

Features:

- Single layer intact collagen
- Not side specific
- Cell occlusive
- 12-16 week resorption time
- High suture pull out strength

Applications include:

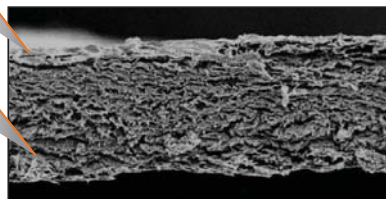
- Extraction sites
- Ridge augmentation
- Graft containment around immediate implants
- Periodontal defects



Mem-Lok® Pliable

not side specific

dense, uniform single layer



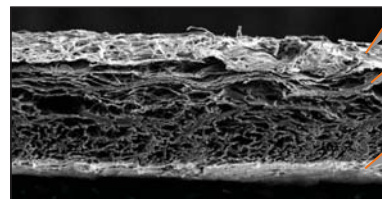
SEM (cross-section) at 50x

Bio-Gide®

fibrous side

lower density

smooth side



SEM (cross-section) at 50x



15mm x 20mm



20mm x 30mm



30mm x 40mm



BH-RCM-ML1520 Mem-Lok Pliable 15mm x 20mm
BH-RCM-ML2030 Mem-Lok Pliable 20mm x 30mm
BH-RCM-ML3040 Mem-Lok Pliable 30mm x 40mm

Bone Regeneration

Bone Regeneration Instrumentation

BioHorizons Bone Fixation Screw Kit



Indicated for use in fixation of cortical onlay grafts and meshes and for membrane tenting used in Guided Bone Regeneration. The kit is compact and conveniently organised for efficient retrieval of instruments and screws. It includes cortical bone drills for both latch-type and friction-grip handpieces.

Kit includes:

- Flexible micro mesh
- Screwdriver body
- Comprehensive instrument set
- Autoclavable screw block with lid
- 24 Screws:
 - (6) 1.4mm x 8.0mm micro screws
 - (6) 1.4mm x 10.0mm micro screws
 - (6) 2.0mm x 10.0mm mini screws
 - (6) 2.0mm x 12.0mm mini screws

BH-160-900



BioHorizons Auto-Tac® System Kit



The AutoTac® System Kit is used to secure membranes with the push of a button. The efficient "no touch" tack system with a convenient one-handed delivery mechanism effectively fixates membranes.

Kit includes:

- Sterilisation tray
- Autoclavable tact cassette (pre-loaded with 21 titanium tacks)
- Dressing pliers, utility pick-up
- Delivery handle

BH-400-270

Surgical Instruments

Bone Files

Hu-Friedy
How the best perform



HF-BF12 Howard



HF-BF67 Howard



HF-BF2X Miller/Coburn (Cross Cut)



HF-BF1X Miller-Colburn 1X



HF-BF3X Miller-Colburn 3X

Curettes

AESCULAP®
Aesculap - a B. Braun company.



AE-D0608 Lucas



AE-D0609 Lucas



AE-D0651 Jansen



AE-D0655 Hemingway

Hu-Friedy
How the best perform



HF-CL84 Lucas 84



HF-CL85 Lucas 85



HF-CL86 Lucas 86

Surgical Instruments



HF-CM10 Miller 10



HF-CM11 Miller 11



HF-CM12 Miller 12



HF-CM9 Miller 9

Black Line



HF-CM2-4X 2/4 Molt
HF-CM2-4SX 2/4 Molt Short Handle



HF-CL86X 86 Lucas
HF-CL86SX 86 Lucas Short Handle



HF-CL87X 87 Lucas
HF-CL87SX 87 Lucas Short Handle

Elevators

Hu-Friedy
How the best perform



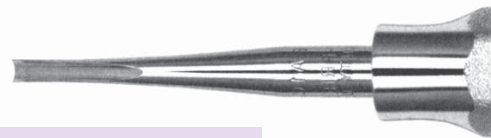
HF-EWJS Warwick James - Straight



HF-EWJL Warwick James - Left



HF-EWJR Warwick James - Right



HF-EA1C Coupland A1C



HF-EA2C Coupland A2C



HF-EA3C Coupland A3C

Surgical Instruments



HF-E44 Cryer (Small) 44



HF-E45 Cryer (Small) 45



HF-E1C Cryer 1C



HF-E2C Coupland 2C



HF-E3C Coupland 3C



HF-E21 Mini Cryer 21



HF-E22 Mini Cryer 22

Luxators

Directa Periotome



Preserves bone integrity and performs less traumatic extractions.

- Highly Acclaimed, renowned and proven functions.

DR-1S 1mm Straight
DR-2S 2mm Straight
DR-3S 3mm Straight

DR-3C 3mm Curved
DR-5S 5mm Straight
DR-5C 5mm Curved

Surgical Instruments

Hu-Friedy Luxating Elevators



HF-ELKIT Kit: Contains 4 x Luxating Elevators (3C, 3S, 5C, 5S) and Sharpening Stone



HF-EL3C Luxating Elevator Curved 3mm



HF-EL3S Luxating Elevator Straight 3mm



HF-EL5C Luxating Elevator Curved 5mm



HF-EL5S Luxating Elevator Straight 5mm

- HF-EL3CSM 3mm Curved Small Handle
- HF-EL3SSM 3mm Straight Small Handle
- HF-EL4C 4mm Curved
- HF-EL4S 4mm Straight
- HF-EL5CSM 5mm Curved Small Handle
- HF-EL5SSM 5mm Straight Small Handle

Black Line 2014



HF-EL3SX Straight 3mm



HF-EL3CX Curved 3mm



HF-EL5CX Curved 5mm



HF-EL5SX Straight 5mm

Root Picks



AE-DL236 Heidbrink - For Lower Roots



AE-DL237 Heidbrink - For Lower Roots

Surgical Instruments

AESCULAP®
Aesculap - a B. Braun company.

Extraction Forceps

Anatomically shaped for a safe and reliable grip on teeth and roots. Slender shape and curved handles for optimum handling. Guaranteed precision instruments.

Upper Incisors & Canines

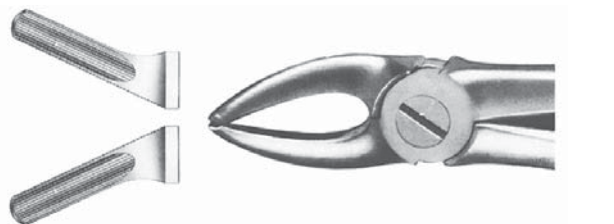


AE-DG5



AE-DG6

Upper Bicuspids



AE-DG101



AE-DG107

Upper Molars - Right Side



AE-DG117

Upper Molars - Left Side



AE-DG118

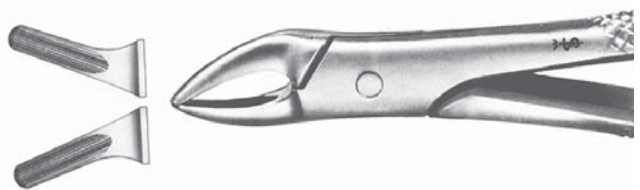
Upper Anterior Roots



AE-DG305



AE-DG320



AE-DG330



AE-DG300 (Kaiser)

Surgical Instruments

Lower Incisors & Bicuspids



AE-DG413

Lower Canines & Bicuspids



AE-DG440

Lower Molars



AE-DG555



AE-DG522



AE-DG570

Lower Roots - 4.5 mm Wide Beaks



AE-DG704

Haemostats

Hu-Friedy

How the best perform



HF-H1 Kelly - Straight



HF-H4 Straight

Needle Holders

AESCULAP®

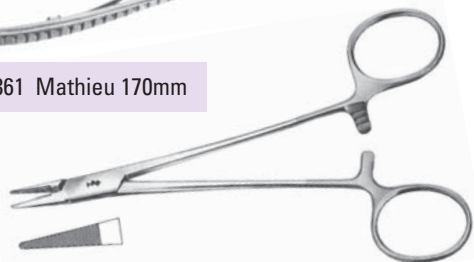
Aesculap - a B. Braun company.



AE-BM235 Mayo-Hegar 150mm



AE-BM361 Mathieu 170mm



AE-BM13 Baby Crile-Wood with Carbide Inserts 150mm



AE-BM003 Durogrip 180mm with Tungsten Carbide Inserts

Surgical Instruments

Hu-Friedy
How the best perform



HF-NH5020 Castro Straight 14cm/5.5"
HF-NH5020R Castroviejo Straight Round 14cm/5.5



HF-NH5021 Castroviejo Curved 14cm/5.5"



HF-NH5021M Castro Micro Curved 14cm/5.5"



HF-NH5024 Castroviejo Straight 18cm/7"



HF-NH5024R Castroviejo Straight Round 18cm/7"



HF-NH5037 Halsey 13cm/5"

HF-NH5038 Crile-Wood 15cm/6"



HF-NH5042 Mayo-Hegar 16cm/6.25"



HF-NH5044 Mayo-Hegar Delicate 18cm/7"
HF-NHM5026R Castro Micro Straight Diamond Dusted Round 18cm/7"

Rongeurs

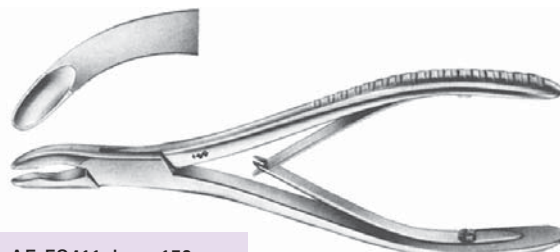
AESCULAP[®]
Aesculap - a B. Braun company.



AE-F0415 Bleumenthal 155mm



AE-F0409 Luer-Friedmann 145mm

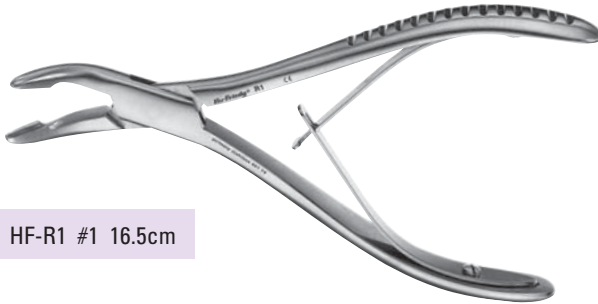


AE-F0411 Luer 150mm

Surgical Instruments

Hu-Friedy

How the best perform



HF-R1 #1 16.5cm



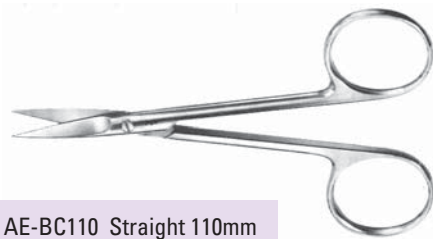
HF-R1A Mead 1A



HF-R5S Cleveland 55

Scissors

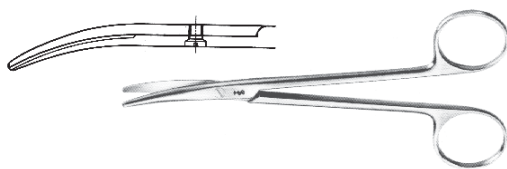
AESCULAP
Aesculap - a B. Braun company.



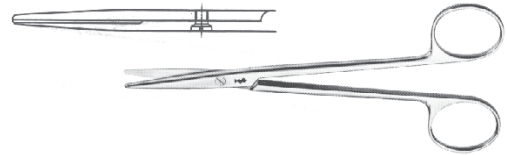
AE-BC110 Straight 110mm



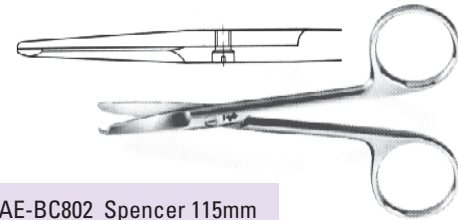
AE-BC111 Curved 110mm



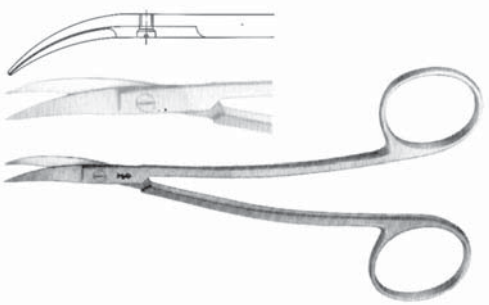
AE-BC606 Metzenbaum Disecting 180mm Curved



AE-BC601 Metzenbaum Disecting 145mm Straight



AE-BC802 Spencer 115mm



AE-BC154 La Grange 110mm - One Blade Serrated

Hu-Friedy

How the best perform



HF-S5001 Kelly Curved 16cm/6.25"



HF-S5054 Metzenbaum Straight Blunt 14.5cm/5.5"

Surgical Instruments



HF-S5056 Metzenbaum Straight Pointed 14.5cm/5.5"



HF-S5057 Metzenbaum Curved Pointed 14.5cm/5.5"



HF-S5080 Goldman-Fox Straight 13cm/5"



HF-S5083 Iris Curved 11.5cm/4.5"

The Black Line Scissors

The Black Line Scissors feature a performance engineered coating for optimal edge retention, enriched contrast and visual acuity at the surgical site with reduced light reflection. The scissors are in a Super-Cut design featuring a razor sharp blade and serrated edge for reduced tissue slippage.



HF-S14SCX LaGrange #14 Double Curved Super Cut

Scalpel Handles

Hu-Friedy
How the best perform



HF-10-130-03 #3



HF-10-130-05 #5 Straight Round



HF-10-130-05E #5 European Style Round



HF-10-130-07 #7



HF-SHDPV Microsurgical Stainless Steel

Tissue Forceps

AESCULAP
Aesculap - a B. Braun company.



AE-BD45 Standard 130mm



AE-BD700 Adson-Brown 120mm

Surgical Instruments



How the best perform



HF-TP31 Semkin-Taylor Straight 12.5cm/5"



HF-TP33 Semkin-Taylor Straight 1x2 12.5cm/5"



HF-TP34 Semkin-Taylor Curved 1x2 12.5cm/5"



HF-TP41 Adson Plain 12cm/4.75"



HF-TP42 Adson 1x2 12cm/4.75"



HF-TP43 Adson-Brown 7x7 12cm/4.75"



HF-TP5042 Adson 1x2 12cm/4.75"



HF-TP5070 General 15cm/6"



HF-TP5071 General 1x2 15cm/6"



HF-TP5090 DeBakey 15cm/6"



HF-TPG1 Gerald 1x2 Serrated/Straight 18cm/7"

Implantology



How the best perform

Dr. Allen Oral Plastic Kit

The Dr. Allen Oral Plastic Kit provides precision micro-instruments specifically designed for today's minimally invasive soft tissue grafting procedures.



HF-ALLENKIT

Bone Scoops



How the best perform



HF-CSEUWES6 Euwe Bone Scoop #6 Short Satin



HF-IMP6522 Bone Graft Scoop

Bone Pluggers



How the best perform



HF-PLGLABANCA LaBanca 3x 1.5mm

Implant Periosteals



How the best perform



HF-PGR1 Grisdale



HF-PPBUSER6 Buser



HF-P20SIC #20 Sicilia

Surgical Instruments

Osteotomes



How the best perform



HF-OSTPAL1 #1 2.7mm



HF-OSTPAL2 #2 3.2mm



HF-OSTPAL3 #3 3.7mm



HF-OSTPAL4 #4 4.2mm



HF-OSS6518S Straight 4mm

Sinus Lift Instruments



How the best perform



HF-IMP6345-71 #710 Sinus Lift Instrument 3mm



HF-SINC2 Sinus Curette #2



HF-IMP6577SC Kramer Nevins Acute



HF-IMP6578 Kramer Nevins Obtuse



HF-IMP300 #300 Sinus Lift Instrument

Sinus Retractors



How the best perform



HF-SGRT Sinus Retractor



HF-SRM10 Sinus Retractor Misch 10

Hu-Friedy Periodontal Knives



How the best perform



HF-KK15-169 #15/16 Kirkland, EverEdge



HF-K01/29 #1/2 Orban DE, EverEdge



HF-K012KP03A9 1/2 Allen Orban, EverEdge



HF-KK15-16 Kirkland

Periodontal Curettes



How the best perform



HF-SK8-9

Surgical Instruments

Hu-Friedy Periosteal Elevators



HF-P9 Molt #9



For initial incision for gingivectomy, especially effective in retro-molar region.

HF-P9A AllenP 9A



HF-PPR3 Prichard



HF-P149 #149



HF-P14 Goldman-Fox #14



HF-P23 Seldin #23

Black Line



HF-PPBUSERX Buser
HF-PPBUSERSX Buser Short Handle



HF-PPR3X PR-3 Prichard
HF-PPR3SX PR-3 Prichard Short Handle



HF-P9X 9 Molt
HF-P9SX 9 Molt Short Handle



HF-PKN152X 152 K-N
HF-PKN152SX 152 K-N Short Handle

Retractors



AE-BT20 125mm

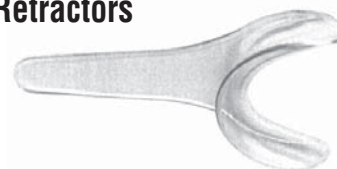


AE-DO470 Bowdler-Henry Rake - 190mm



AE-DO472 Laster

Retractors



Suitable for intra-oral photography. Cold sterilisation only.

HF-CRPA Tongue & Cheek Plastic/Adult



HF-CRPC Plastic/Child



HF-CRM University of Minnesota



HF-CRM2 Cawood-Minnesota Length 15cm



HF-CRC Columbia

Wound Management

Alveogyl Paste

Dry socket alveolar dressing. One step self-eliminating treatment for rapid alleviation of pain.

IV-ALVOGYL Jar 10g



Gelatamp

roeko



Gelatamp gelatine sponge with colloidal silver provides an effective, biocompatible product for reliable post extraction treatment. The colloidal silver has a bactericidal depot effect.

Features:

- Quick haemostasis
- Stabilises the blood coagulum
- Smooth and complete resorption
- Effective against a wide range of bacteria
- Long lasting depot effect

With Gelatamp:

- There are no complications in the healing process
- The wound does not have to be reopened
- Time is saved

14 x 7 x 7 mm
RO-274007 Jar of 50 Pieces
RO-274008 Sterile 20 Piece Blister Pack

SPONGOSTAN™ Sponge Haemostats

Johnson & Johnson
MEDICAL



For Excellent Haemostasis with Enhanced Versatility.

- SPONGOSTAN Powder is made from the same safe, absorbable porcine gelatin that is used in SPONGOSTAN Absorbable Gelatin Sponge
- Proven safety and efficacy in a sponge form – used over 150 million times

Proven Performance in a Gelatin Sponge.

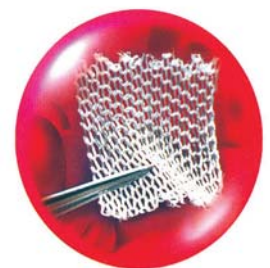
- Tissue reaction in neurological procedures comparable to competitive gelatin sponge
- A history of safety – no product associated systemic adverse reactions reported

JJ-0005 Pack of 24 1cm x 1cm x 1cm

Surgicel®

Johnson & Johnson
MEDICAL

The Choice of Surgeons for over 50 Years. Unique ORC-fibril technology delivers fast haemostasis.



Excellent Haemostasis with Optimal Handling.

- Proven record of efficacy for a broad range of bleeding situations
- Sheer weave allows visibility of the bleeding site
- Flexible texture conforms to irregular surfaces – provides optimal conformability in a fabric
- Easily cut or folded

Surgicel Compatibility.

- Well suited for use with electrocautery
- Easily removed after haemostasis is achieved
- Appropriate for a wide variety of procedures

JJ-71955 Box of 12 1.3 x 5.1cm

Oral Surgery

Surgical Sutures

HENRY SCHEIN®
CORPORATE BRAND



The Henry Schein Advantages:

- Sharp needles for easy penetration
- Strong needle-to-suture attachment ensures consistent quality and less tissue trauma
- Long cutting edge for suturing control

Description:

Silk Black: Noncapillary silk has excellent handling and tying characteristics. Modern braiding technique provides a uniform smooth surface and a greater tensile strength.

PGA Violet: The extraordinarily smooth, low friction proprietary coating reduces tissue drag. These synthetic absorbable sutures ensure closure through the critical wound healing period. They retain approximately 50% of their high initial strength at two weeks and 20% of their strength at three weeks.

PGA Rapid: Developed for short-term closures, is ideal for skin and mucosa closings that may benefit from fast suture absorption. It maintains 50% strength at 5 days, 0% at 14 days and is essentially absorbed at 42 days. It is processed to absorb quickly with little tissue reaction.

HS Item Code	Suture material	Needle Code	Length	Indication	Ethicon Code	HS Item Code	Suture material	Needle Code	Length	Indication	Ethicon Code
900-3025	PGA rapid 3-0	3/8RC18 (C-6)	45 cm	• Absorbable • Braided • Short term wound support • For superficial soft tissues	V2930G (FS2)	900-3033	PGA violet 3-0	1/2TP19 (T-28)	45 cm	• Absorbable • Average 50-90 days for absorption	V305G
900-3027	PGA rapid 4-0	3/8RC18 (C-6)	45 cm	• Absorbable • Braided • Short term wound support • For superficial soft tissues	V2920G (FS2S)	900-3034	PGA violet 4-0	3/8RC18 (C-6)	70 cm	• Absorbable • Average 50-90 days for absorption	V3922G (FS2S)
900-3028	PGA rapid 4-0	1/2TP19 (T-28)	45 cm	• Absorbable • Braided • Short term wound support • For superficial soft tissues	V2140G	900-3035	PGA violet 4-0	1/2TP18 (T-28)	45 cm	• Absorbable • Average 50-90 days for absorption	V304G (RB1)
900-3029	PGA rapid 3-0	1/2TP19 (T-28)	45 cm	• Absorbable • Braided • Short term wound support • For superficial soft tissues	V2150G	900-3036	PGA violet 3-0	3/8RC24 (C-7)	70 cm	• Absorbable • Average 50-90 days for absorption	V452G (FS1)
900-3031	PGA rapid 3-0	1/2 TP22 (T-14)	45 cm	• Absorbable • Braided • Short term wound support • For superficial soft tissues	V2190G	900-3037	PGA violet 3-0	1/2TP22 (T-14)	70 cm	• Absorbable • Average 50-90 days for absorption	V311G (SH1)

Surgical Suture Black Braided Silk Box 12

HS100-7762 1/2 circ, 3/0, 18", C-43 Needle
 HS100-6320 1/2 circ, 3/0, 18", C-9 Needle
 HS100-7772 3/8 circ, 3/0, 18", C-6 Needle
 HS100-6830 3/8 circ, 4/0, 18", C-6 Needle
 * Other sizes also available

Surgical Suture PGA Rapid Box 12

HS-9003025 3/8 RC18 3-0 45cm
 HS-9003027 3/8 RC18 4-0 45cm
 HS-9003028 1/2TP19 4-0 45cm
 HS-9003029 1/2TP19 3-0 45cm
 HS-9003031 1/2TP22 3-0 45cm

Surgical Suture PGA Violet Box 12

HS-9003034 3/8 RC18 4-0 70cm
 HS-9003035 1/2 TP18 4-0 45cm
 HS-9003036 3/8 RC24 3-0 70cm
 HS-9003037 1/2 TP22 3-0 70cm
 HS-9003033 1/2TP19 3-0 45cm

Oral Surgery

Ethicon Vicryl Sutures



Material:

- Polyglactin 910
- Copolymer of: glycolide (glycolic acid) and L lactide (lactic acid)
- Synthetic Multifilament (braid)

Wound Support Time:

- Medium term - 4 weeks

Tensile Strength:

- 75% - 2 weeks
- 50% - 3 weeks
- 25% - 4 weeks

Absorption:

- Absorbed by 56-70 days
- Absorbed by hydrolysis

JJ-J423H Coated 19mm 3/0 FS2 3/8 Circle Reverse Cut 45cm Box 36
 JJ-J494G Coated 13mm 4/0 P3 3/8 Circle Reverse Cut 45cm Box 12
 JJ-J304H Coated 17mm 4/0 RB1 1/2 Circle Taper Point 70cm Box 36
 JJ-J493G Coated 13mm 5/0 P3 3/8 Circle Reverse Cut 45cm Box 12
 JJ-J844G Coated 16mm 5/0 PC3 3/8 Circle Conventional Needle 45cm Box 12



Ethicon Vicryl Rapide Sutures



Material:

- Polyglactin 910
- Copolymer of: glycolide (glycolic acid) and L lactide (lactic acid)
- Synthetic Multifilament (braid)

Wound Support Time:

- 7 - 10 days

Tensile Strength:

- 50% - 5 days
- 0% - 10 days

Absorption:

- Absorbed by 42 days
- Absorbed by hydrolysis

JJ-VR416 26mm 3/0 SH 1/2 Circle Taper Point 70cm Box 12
 JJ-VR497 19mm 3/0 PS2 3/8 Circle Reverse Cut 45cm Box 12
 JJ-W9923 19mm 3/0 P 3/8 Circle Reverse Cut 75cm Box 12
 JJ-W9927 22mm 3/0 1/2 Circle Conventional Needle 45cm Box 12
 JJ-W9918 16mm 4/0 PC3 3/8 Circle Conventional Needle 75cm Box 12
 JJ-VR496 19mm 4/0 PS2 3/8 Circle Reverse Cut 45cm Box 12

Velosorb™ Fast Sutures



Velosorb™ Fast sutures are composed of absorbable synthetic polyester comprised of glycolide and lactide (derived from glycolic and lactic acids). Velosorb™ Fast sutures are indicated for use in soft tissue approximation of the skin and mucosa, when only 7-10 days of wound support is required.

Features

- Pliable handling and easy knot tying during closing
- Strong wound approximation during the critical wound healing period
- Fast absorption
- Minimal tissue drag



TY-CV1214 17mm 4-0 1/2 Circle CV-23 75cm Box 36
 TY-CV416G 26mm 3-0 1/2 Circle V-20 75cm Box 12
 TY-SV2296 16mm 5-0 3/8 Reverse Cutting C-12 75cm Box 36
 TY-SV496G 19mm 4-0 3/8 Reverse Cutting P-12 45cm Box 12
 TY-SV497G 19mm 3-0 3/8 Reverse Cutting P-12 45cm Box 12
 TY-SV9927 23mm 3-0 1/2 Circle C-23 45cm Box 36

Polysorb™ Sutures

Polysorb™ sutures are composed of Lactomer™ glycolide/lactide copolymer, which is a synthetic polyester composed of glycolide and lactide (derived from glycolic and lactic acids). These sutures are coloured violet to increase visibility and are also available undyed.



The advanced extrusion process of the molecule of Lactomer™ 9-1, the exclusive braiding process and coating system, give the suture:

- Excellent strength over the critical wound healing period
- Excellent knot security
- Excellent handling
- Predictable absorption profile

TY-GL182 22mm 3-0 1/2 Circle CV-25 75cm Box 36
 TY-GL303 17mm 3-0 1/2 Circle CV-23 75cm Box 36
 TY-SL630 16mm 5-0 3/8 Reverse Cutting C-12 75cm Box 36
 TY-SL635 19mm 4-0 3/8 Reverse Cutting C-13 75cm Box 36
 TY-SL693 24mm 3-0 3/8 Reverse Cutting C-14 75cm Box 36
 TY-UL303 17mm 4-0 1/2 Circle CV-23 75cm Box 36

Absorbable Sutures

Safil Quick+



Safil Quick+ is a short-term absorbable braided and coated synthetic suture, made of low molecular weight polyglycolic acid. Degrades by hydrolysis and provides predictable and reliable absorption.

Features

- Retention of 50% knot tensile strength after 5 days
- Complete mass absorption in around 42 days
- Multifilament, braided structure
- Colour undyed
- Chemical composition 100% polyglycolic acid
- Coating glyconate
- Origin synthetic
- Type of absorption by hydrolysis
- Sterilisation ethylene oxide

Advantages

- Quick absorption profile
- Predictable and constant degradation rate
- High initial tensile strength
- Good knot security
- Excellent handling properties

Box of 36
AE-C0046226 4/0 HS18 45cm 1/2 Circle Reverse Cut Undyed

Box of 12
AE-G1046221 3/0 DS19 45cm 3/8 Circle Reverse Cut
AE-G1046235 3/0 DS24 70cm 3/8 Circle Reverse Cut
AE-G1046041 3/0 HR26 70cm 1/2 Circle Round
AE-G1046420 4/0 DS19 70cm 3/8 Circle Reverse Cut
AE-G1046202 5/0 DS12 70cm 3/8 Circle Reverse Cut

Safil



Safil is a mid-term absorbable braided and coated synthetic suture made of pure polyglycolic acid. Safil degrades by hydrolysis and provides predictable and reliable absorption.

Features

- Retention of 60% – 70% knot tensile strength after 14 days
- Retention of 24% – 42% knot tensile strength after 21 days
- Complete mass absorption in 60 to 90 days
- Braided, monofilament (USP 9/0 - 10/0), multifilament
- Colour violet or undyed
- Chemical composition polyglycolic acid
- Coating glyconate
- Type of absorption by hydrolysis
- Sterilisation ethylene oxide

Advantages

- High tensile strength
- Excellent knotting ability
- Smooth passage through tissue
- Easy handling

Box of 36
AE-C1049421 3/0 DS19 70cm Undyed 3/8 Circle Reverse Cut 19mm
AE-C1048213 4/0 DS16 45cm Violet 3/8 Circle Reverse Cut 16mm
AE-C1048220 4/0 DS19 45cm Violet 3/8 Circle Reverse Cut 19mm
AE-C1048207 5/0 DS16 45cm Violet 3/8 Circle Reverse Cut 12mm

Oral Surgery

Monosyn Quick



Monosyn Quick is an undyed short-term absorbable synthetic monofilament suture made of glyconate for the approximation of soft tissue with a fast healing process. Monosyn Quick offers excellent handling properties and high knot security. Monosyn Quick is recommended for all soft tissue with a fast healing process approximations.

Features

- Retention of 50 % knot tensile strength after 6-7 days
- Complete mass absorption after 56 days
- Monofilament
- Colour undyed
- Chemical composition: Glyconate (72% glycolide, 14% trimethylene carbonate, 14% caprolactone)
- Coating uncoated
- Origin synthetic
- Type of absorption by hydrolysis
- Sterilisation ethylene oxide

Advantages

- Short-term absorption profile
- High knot pull tensile strength
- Superior handling features

Box of 36		
AE-C0025003	3/0 DS19	45cm Undyed 3/8 Circle Reverse Cut
AE-C0025002	4/0 DS19	45cm Undyed 3/8 Circle Reverse Cut
AE-C0025125	5/0 DS16	45cm Undyed 3/8 Circle Reverse Cut

Monosyn



Monosyn is a mid-term absorbable synthetic monofilament suture made of glyconate, available in undyed colour for the closure of superficial wounds and in violet colour for the rest of indications. Monosyn offers excellent handling properties and high knot security. Monosyn is recommended for all soft tissue approximations.

Features

- Retention of 50% knot tensile strength after 14 days
- Complete mass absorption in 60 to 90 days
- Monofilament
- Colour violet or undyed
- Chemical composition: Glyconate (72% glycolide, 14% trimethylene carbonate, 14% caprolactone)
- Coating uncoated
- Origin synthetic
- Type of absorption by hydrolysis
- Sterilisation ethylene oxide

Advantages

- Deal degradation profile for soft tissue
- Smooth tissue passage
- Easy handling
- High knot-pull tensile strength
- Excellent knot security
- Rapid mass absorption

Box of 36		
AE-C0023405	3/0 DS19	70cm Beige 3/8 Circle Reverse Cut
AE-C0022215	3/0 DS24	45cm 3/8 Circle Reverse Cut
AE-C0022236	3/0 HS26	70cm 1/2 Circle Reverse Cut
AE-C0023404	4/0 DS19	70cm Undyed 3/8 Circle Reverse Cut 19mm
AE-C0023204	4/0 DS19	45cm Beige 3/8 Circle Reverse Cut
AE-C0022024	4/0 HR26	70cm Violet 1/2 Circle Taper 26mm
AE-C0023403	5/0 DS19	70cm Beige 3/8 Circle Reverse Cut
AE-C0022008	5/0 HR13	1/2 Circle Taper 13mm

Oral Surgery

Burs

Tungsten Carbide



H162SL/SXL

H 162 SL H 162 SXL



F.G.	TH162SL314*	014
F.G.	TH162SXL314*	014
R.A.	TH162SL204	014
H.P.	TH162SL104	014

Pack of 5

*H162SL is longer 26mm length and H162SXL is extra long at 31mm.

H254E/254LE - For Bone Tissue AND Hard Tooth Substance

H 254 E H 254 LE



F.G.	TH254E314*	012
F.G.	TH254LE314*	012
H.P.	TH254E104	012

Pack of 5

*H254E is longer 26mm length and H254LE is extra long at 31mm.

H162

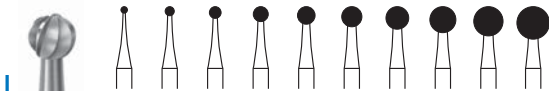


H 162

F.G.	TH162314	016
R.A.	TH162204	016
R.A.L.	TH162205	016
H.P.	TH162104	016
H.P.L.	TH162105	016
H.P.X.L.	TH162106	016

Pack of 5

H141



R.A.L.	TH141205	010	014	018	023	027	031	035	040		
R.A.X.L.	TH141206	010	014	018	023	027	031	035	040		
H.P.	TH141104	010	014	018	023	027	031	035	040	045	050
H.P.L.	TH141105	010	014	018	023	027	031	035	040	045	050
H.P.X.L.	TH141106				023		031				

Pack of 5

H1SOS



R.A.	TH1SOS204	023
H.P.	TH1SOS320*	023

Pack of 5

*Special surgical handpiece length of 51mm.

H33LSOS



R.A.	TH33LSOS204	016
H.P.	TH33LSOS320*	016

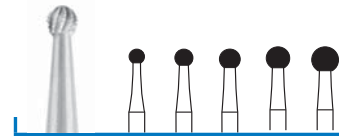
Pack of 5

*Special surgical handpiece length of 51mm.

Ceramic



K160A



R.A.L.	K160A205	023	027	031	035	040
H.P.	K160A104	023	027	031	035	040

Pack of 5

K157



F.G.	K157314	016	021
R.A.	K157204	016	021
R.A.L.	K157205	016	021
H.P.	K157104	016	021

Pack of 5

Key to Shank Types/Lengths

F.G. = Friction-Grip (19mm)
 R.A. = Right Angle (22mm)
 R.A.L. = Right Angle Long (26mm)
 R.A.X.L. = Right Angle Extra Long (34mm)
 H.P. = Surgical Handpiece (44.5mm)
 H.P.L. = Surgical Handpiece Long (65mm)
 H.P.X.L. = Surgical Handpiece Extra Long (70mm)

Anaesthetic & Pain Control

Local Anaesthetics

Ubistesin™ 4% Articaine



For routine-type interventions



- Contains 4% Articaine with Adrenaline 1/200 000 as a vasoconstrictor
- Contains only Sulphite as a stabiliser
- Suitable for adults and children over the age of 4 years
- Average duration of action: 45 minutes, with an onset period of 1–3 minutes

MD-15045 Ubistesin 1.7ml, 50/Tin

Ubistesin™ Forte 4% Articaine



For more complex interventions requiring prolonged anaesthesia



- Contains 4% Articaine and Adrenaline 1/100,000 as a vasoconstrictor
- Contains only Sulphite as a stabiliser
- Suitable for adults and children over the age of 4 years
- Average duration of action: 75 minutes, with an onset period of 1–3 minutes

MD-15211 Ubistesin Forte 1.7ml, 50/Tin

Xylestesin™- A 2% Lidocaine



For routine-type interventions



- Contains 2% lidocaine with epinephrine 1/80,000 as a vasoconstrictor
- Contains only sulfite as a stabiliser (max 0.31 mg)
- Suitable for adults and children
- Average duration of action: 30 – 60 minutes pulpal anesthesia and 120 – 180 minutes soft tissue anesthesia; onset period of 1–3 minutes

MD-10811 Xylestesin-A 2% 1.7ml 50/Tin

Lidocaine HCl 2% with Epinephrine



- Validated siliconisation process ensures smooth injection
- Colour coded stoppers and labeling for easy identification of each anesthetic formula
- Mylar wrapping prevents breakage and blister packaging for no glass to glass contact
- 1.8ml Anesthetic Cartridge, Red, Epinephrine 1:100,000

HS465-1205 Lidocaine HCl 2% 1.7ml, Box 50

Anaesthetic & Pain Control

Scandonest 2% Special

Mepivacaine hydrochloride 2% with adrenaline 1:100,000.

Features:

- Neutral glass cartridge
- No latex exposure
- Paraben free



IV-222A-50 2.2ml 50 Cartridges
IV-2185-50 1.8ml 50 Cartridges

Scandonest 3% Plain

Mepivacaine hydrochloride 3% without adrenaline. Contains no vasoconstrictors.

Features:

- Free of all preservatives
- Ideal for all at risk patients
- Neutral glass cartridge
- No latex exposure



IV-3225-50 2.2ml 50 Cartridges
IV-3185-50 1.8ml 50 Cartridges

Septanest 4% (Articaine)

Articaine hydrochloride 4% with adrenaline 1:100,000. The articaine molecule is very small and highly lipophilic and hydrophilic.

Features:

- Fast onset
- Excellent anaesthesia
- Low allergenicity
- Paraben free



IV-422-50 2.2ml 50 Cartridges

Lignospan 2% Special

Lignocaine hydrochloride 2% with adrenaline (epinephrine) 1:80,000.

Features:

- Neutral glass cartridge
- No latex exposure
- Paraben free



IV-222L-50 2.2ml 50 Cartridges

Sedation

Hypnovel (Midazolam)



HYPNOVEL may be injected or taken orally as a sedative during some short medical procedures. It may be given before an operation to produce sleepiness or drowsiness and to relieve anxiety.

R5-1117958 Tabs 7.5mg Box of 100
R5-2263068 Ampoules 15mg 3 x 5ml
R5-2263076 Ampoules 5mg 10 x 5ml

Analgesic

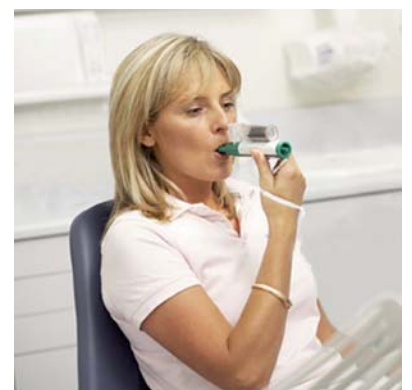
Pentrox



Provides pain relief in the dental surgery

Inhaled non-narcotic analgesic with rapid onset and gradual offset of relief. Self administered by the patient to control their own level of relief intermittently during treatment. Can be used during; Initial examination, pre-injection to analgesic and during uncomfortable procedures that may cause pain.

- High patient compliance
- Small and lightweight
- Single patient use and disposable
- Can be fitted to a standard face mask
- Simple to use



MP-MEM52505
Single Pack

Anaesthetic & Pain Control

Delivery Systems

STA Wand

The Single Tooth Anesthesia (STA) System from Milestone Scientific is the first computer-controlled local dental anesthetic system where just one injection at a single tooth is all that's needed to scientifically, safely and predictably ensure single-session injection precision. It's even highly effective for multi-quadrant cases. As the dentist advances the needle the STA system continuously measures and monitors the pressure of anaesthetic solution as it exits the needle tip. When the specific resistance of intraligamentary tissue is identified by the STA system, an audible and visible announcement is given to confirm that the periodontal ligament has been positively reached. Anaesthetic is delivered at a controlled pressure and rate.



MILESTONE
SCIENTIFIC

Doctor Benefits:

- Assured accuracy of needle placement
- Allows the STA-PDL injection to be your predictable primary injection
- Immediate anaesthesia means operative work begins without the wait
- Allows the STA-PDL injection to last as long as a traditional infiltration
- Easier, faster and better anaesthesia
- Allows the Palatal injection to be virtually painfree

Patient Benefits:

- Virtually painless injection
- Eliminates risk of tissue damage
- No collateral numbness (droopy lip or numb tongue)
- A "positive" experience in the dental chair

Wand STA Unit WA-STA-5220-220

Wand STA Handpieces with Bonded Needle Box of 50
 WA-STA-5050-301 30g 1 inch
 WA-STA-5050-2725 27g 1¼ inch
 WA-STA-5050-305 30g ½ inch

Wand Plus Handpieces with Bonded Needle Box of 50
 30g 1 inch WA-205-301
 27g 1¼ inch WA-2050-2725
 30g ½ inch WA-2050-305

Needles

Dental Needles



Morita Dental needles have a unique indicating dot to show the lancet bevel position at a glance. Designed for both luer lock and screw-on syringe. Lancet points at both patient and cartridge end.

- M-580005 Box of 100 27 Gauge Extra-Long (41mm)
- M-580001 Box of 100 27 Gauge Short (21mm)
- M-580004 Box of 100 30 Gauge Short (25mm)
- M-580006 Box of 100 30 Gauge Extra-Short (12mm)

Dental Needles



The ultra-sharp LANCET POINT minimises pain and discomfort, and eliminates the need for surface anaesthesia prior to injection. The high-tensile TERUMO needle is difficult to break even if the patient moves violently during injection. Other features include: bevel indicator, colour coding identifies needle gauge, screw hub locks needle firmly onto syringe and paper seal to ensure sterility.

- T1-1DN-2722 Box of 100 27 Gauge Short (22mm)
- T1-1DN-2735 Box of 100 27 Gauge Medium (35mm)
- T1-1DN-2741 Box of 100 27 Gauge Long (41mm)
- T1-1DN-3013 Box of 100 30 Gauge Extra-Short (13mm)
- T1-1DN-3022 Box of 100 30 Gauge Short (22mm)

Anaesthetic & Pain Control

Syringes

Pluraject™ 2 Syringe



Aspiration syringe for cylindrical glass ampoules with perforated stoppers.

Features:

- Easy handling.
- Good passive and active aspiration possible.
- Improved technology to contain the capsule.

MD-76012

Self-Aspirating Syringe



IV-SYRSAG222ASP Autoclavable Self-Aspirating 2.2ml Syringe

Self-Aspirating Syringe



A Type



CW Type - 1.8ml & 2.2ml

HS-9006402 A Type
HS-9006403 CW Type 1.8ml
HSD-9791166 CW Type 2.2ml

Sharps Disposal

Sharps Containers



The safest solution for disposal of sharps waste.

BD-303205 1.4L

BD-303208 7.8L

Handpieces & Surgical Motors

Surgical Motors

The Implant Centre 2

The Implant Centre 2 combines, in a complete table-top unit, the most advanced ultrasonic and rotary technologies, ensuring total independence in increasingly diverse clinical areas.

Applications:

- Pre-implant Surgery
- Implantology
- Conventional treatments

S5-F27203



Piezotome Cube

Dynamic power responsiveness for superior osseous surgery.

Features:

- Immediate power responsiveness for maximum efficiency and safety (the D.P.S.I. technology)
- Faster procedures with upgraded conception, 6 ceramic rings and CUBE LED handpiece
- Broaden your scope with exclusive tips for many surgical applications
- Increase patient case acceptance with superior healing outcomes

S5-F50100



Piezotome Solo

Piezotome Solo is incredibly easy to use thanks to its straightforward settings.

Features:

- Piezotome Solo unit
- Piezotome handpiece
- Multifunction footswitch
- Essential kit with its dynamometric wrench

S5-F57503



EXPERTsurg® LUX



More safety with high precision:

- Auto-calibration guarantees precise speed and torque for maximum safety
- Work ergonomically with one of the world's lightest and smallest surgical motors
- Smooth and vibration-free

More reliability with high performance:

- 80 Ncm torque at the Instrument
- INFORM technology for high-torque and vibration-less startup

Less hassle with time-saving features:

- Easy to learn with intuitive programming
- Easy to use with quick info icons and colour display
- Easy to clean

All in one Surgical unit including:

- Surgical motor INTRA LUX S600 LED
- Multifunctional foot control (cable length 2.5 m)
- Motor tubing for S600 LED
- Starter tube set (5 pieces)
- Motor and instrument holder
- Irrigation bracket
- Integrated peristaltic pump
- Power supply

KV-1-008-3500

Handpieces & Surgical Motors

VarioSurg3 For Piezo Surgery



LED Illumination

- Multi function Piezo Electric Unit for minimally invasive surgery
- Eliminates heat and reduces bleeding during operation
- Optic handpiece is lightweight and slimline
- Soft tissue damage is minimal even during accidental contact
- Minimal blood during cavitation ensures a clearer surgical site

Features:

- 3 modes (SURG, ENDO, PERIO)
- Selectable burst mode for added power
- 9 Programs (SURG x 5, ENDO x 2, PERIO x 2)
- Adjustable LED light intensity
- Automatic cleaning mode
- Feedback function
- Auto tuning function
- Dynamic link feature for integration with Surgic Pro+

NK-Y1002726 VarioSurg Complete Set

Surgic Pro+ For Implant and Oral Surgery



LED Illumination

- Multi function Brushless Surgical Micromotor with USB data storage facility
- One unit for many surgical applications with USB port for easy data storage
- Control unit with Advanced Handpiece Calibration (AHC)
- Automatic calibration of the micromotor and the handpiece to the rotational resistance of each individual handpiece prior to operation

Features:

- Variable Speed: 200–40,000 min-1
- Torque: 5-80 Ncm
- Power: 210W
- Ergonomics: Lightweight and compact

NK-Y1001932 Optic USB Unit with 20:1 Reducing Handpiece
 NK-Y1001933 Optic Unit (no USB) with 20:1 Reducing Handpiece
 NK-Y1001934 Non-Optic Unit (no USB) with 20:1 Reducing Handpiece

iSD900 Cordless Screwdriver With Torque Calibration System

- Guarantees precise torque control in Prosthodontic screw-fixing procedures
- Saves time, allowing precise risk-free screw tightening

NK-Y1001358



Handpieces & Surgical Motors

Surgical Handpieces

S201L SURGmatic 20:1 Contra-Angle with Light*

- Detachable head and body, easy to clean
- EXPERTgrip for improved grip and hygiene
- Head with internal cooling system (as per Kirschner and Meyer)
- External cooling with media connector attached to the head
- Optimised head gearing and ball bearings for long service life
- Speed: 15 – 2,000 rpm
- Max torque: 55 Ncm



KAVO
Dental Excellence

S11L SURGmatic 1:1 Handpiece with Light*

- EXPERTgrip for improved grip and hygiene
- For use with handpiece burs with standard length 44.5 mm. Insert the supplied spacer for contra-angle burs
- With external spray
- Speed: 40,000 rpm
- Max torque: 5.5 Ncm



KAVO
Dental Excellence

KV-1-009-0470 S201L SURGmatic 20:1 Contra-Angle with Light*

KV-1-009-1005 S11L SURGmatic 1:1 Handpiece with Light*

*Also available in hexagonal clamp chuck option at the same price.

Surgical / ENT Straight Instruments

- Non-optic 1:1 transmission with external irrigant attachment
- Speed: Up to 40,000 rpm
- Reinforced chuck
- Max Torque: 10Ncm



KV-0.524.5610 3610N2 For Long Handpiece 62.5mm Burs*

KAVO
Dental Excellence



KV-0.524.5600 3610N1 For Standard Handpiece 44.5mm Burs*



KV-0-524-5620 3610N3 For Extra Long Handpiece 70mm Burs*

*Can use Contra-Angle burs with supplied bur stopper.

Handpieces & Surgical Motors

Surgical Lowspeeds

Ti-Max



Ti-Max Handpieces

The Ti-Max Range of Implant Contra-angles and Straight Handpieces offer Extraordinary Durability and Reliability for all your Surgical Needs.

Z-SG45L 45° 1:3 Increasing Contra-Angle



- Reverse venting
- Titanium body with scratch resistant DURAGRIP
- Clean head system
- Push button chuck
- External cooling
- Anti-heat system
- Max speed: 120,000 min⁻¹
- For Friction-Grip burs (20-25mm)
- Triple spray

NK-C1107 (Optic)
NK-C1108 (Optic)

X-DSG20L 20:1 Reduction Contra-Angle



NK-C1068 (Optic)
NK-C1067 (Non-Optic)

X-SG65L 1:1 Direct Drive



- Can use Handpiece or Contra-Angle* burs
- Maximum speed 40,000 rpm

NK-H1009 (Optic)

*Need to insert supplied bur stopper to use CA burs.

Micro-Surgery Straight Handpiece*



SGS-ES 1:1 Direct Drive

- For surgical burs (ø2.35)
- Twist chuck, non-optic
- Maximum Speed 40,000 min⁻¹

NK-H264



SGS-E2S 1:2 Increasing

- For surgical burs (ø2.35)
- Twist chuck, non-optic
- Maximum Speed 80,000 min⁻¹

NK-H266

*External irrigant attachments available.

Micro-Surgery 20° Angle Handpieces*



SGA-ES 1:1 Direct Drive

- For surgical burs (ø2.35)
- Twist chuck, non-optic
- Maximum Speed 40,000 min⁻¹

NK-H263



SGA-E2S 1:2 Increasing

- For surgical burs (ø2.35)
- Twist chuck, non-optic
- Maximum Speed 80,000 min⁻¹

NK-H265

*External irrigant attachments available.

Detection & Planning

Digital Imaging

ProMax 3D Range

PLANMECA



The Planmeca ProMax family of 3D Imaging Units feature differing fields of view to suit all clinical requirements. Patient care and comfort has always been at the heart of their development, so Planmeca has introduced ultra-low dose modes.

- User-friendly interface provides guidance and easy patient positioning
- Features ultra-low dose technology
- Includes Romexis® licensing for up to five simultaneous users
- High resolution endo mode
- ProFace facial scan
- New 4D jaw tracking capability

Field Of View (FOV) ranging from:

4cm x H 5cm to 23 cm x H 26cm

Veraview 3D F40 & 3D R100

MORITA



VeraViewepocs 3D F40 and 3D R100 have changed the shape of 3D imaging. The range's ground breaking patent pending 3D Reuleaux Full Arch FOV (field of view) provides a unique shape for full arch imaging. With up to six FOV options and Morita's world renowned image quality, VeraViewepocs 3D range is suitable for a wide variety of dental applications.

- Fine high speed, exposure time 9.4 seconds
- High resolution images even in Fine High Speed Mode
- Excellent quality images using both Digital Direct Automatic Exposure (DDAE) and Automatic Image Enhancer (AIE)
- Simple and accurate patient positioning with AF automatic positioning, triple laser beams, and power assisted movement

Fields of View available:

3D F40 – (2 FOV options)
4cm x H 4cm to 4cm x H 8cm

3D R100 – (6 FOV options)
4cm x H 4cm to 10cm x H 8cm

Detection & Planning

OP300 3D & Maxio



The ORTHOPANTOMOGRAPH OP300 3D and OP300 3D Maxio utilise familiar stable and open patient positioning as well as two-dimensional SMARTVIEW scout images and motorised chinrest for precise FOV positioning.

They are optimised for a very low radiation dose.

- Up to five fields of view available
- Low-dose technology
- Standard and High resolution scans
- Metal artefact reduction

Fields of View available:

OP300 3D – (2 FOV options)
4cm x H 6cm to 8cm x H 6cm

OP300 3D Maxio – (up to 5 FOV options)
5cm x H 5cm to 15cm x H 13cm

i-CAT FLX



The i-CAT FLX is widely regarded as the industry standard in cone beam technology. With features such as adjustable dosage and image quality and multiple low dose settings, the welfare of the patient is easy to manage, while achieving a range of image sizes to fit your requirements.

- High resolution images with flexible scanning options to control radiation dose
- QuickScan provides lower dose scan options
- User-friendly SmartScan Studio touchscreen easy scan selection to suit each patient
- Capture traditional 2D images using i-PAN
- Clinically driven image and exposure control

Fields of view available:

i-CAT FLX – (9 FOV options)
8cm x H 8cm to 23cm x H 17cm

Detection & Planning

Intraoral Scanning

3shape 

TRIOS 3

The new 3rd generation TRIOS® is a three in one digital impression solution. An intraoral scanner for fast and easy 3D colour impression taking; an integrated intraoral camera, so there's no need to purchase one separately, and shade measurement while you scan, for more accurate and predictable results. TRIOS® enables you to be more efficient, more precise and your patients more comfortable.

- High accuracy capture in colour
- Automatically measures the teeth shades as you scan
- HD Photos for instant case images
- Clinical scan validation
- Small footprint - can be placed where space is very limited
- Spray and powder-free for optimal accuracy and patient comfort
- Optimised Ultrafast Optical Sectioning software - now 40% faster
- Autoclaveable tip with antimist heater

Specialist applications include:

- Orthodontics
- Implants
- Endodontics (post and core)

Available in Pod, Cart and Chair Integration formations



Trios Implant Studio Package

3shape 

Implant Studio brings together implant planning, prosthetics and design of surgical guides for local manufacturing, providing a cost effective solution. This also serves to improve turn-around time, helping to enhance clinical results, while creating new business opportunities for dentists and labs alike.

- Full digital workflow for dentists and labs
- Easy process for implant planning
- Surgical guide design function
- User-friendly interface
- Package includes TRIOS® scanner and Implant Studio software
- Local surgical guide manufacturing option
- Includes 2 year annual licence



Detection & Planning

True Definition Scanner

Accurate. Precise.

The 3M True Definition Scanner supports open STL files, so you can work with your orthodontic lab, design and mill chairside, or share files with other trusted partners for expanded clinical solutions. And, because your digital impressions are generated by 3M's 3D-in-motion video technology, they'll feature extraordinary detail with industry leading accuracy - providing more control and consistency than traditional processes.

- **Accuracy:** Proven to be more accurate - and more consistently accurate - than other leading intraoral scanners
- **Ease of Use:** Innovative design for fast, easy and comfortable scanning
- **Affordability:** Low cost of entry into intraoral scanning

Fits your Hand

Compact, ergonomic design enables enhanced patient engagement and the freedom to move between operatories

Fits your Budget

A cost-effective entry into digital dentistry

Fits your Practice

Elevates care by producing a clear, easy-to-understand visual representation of the anatomy to help increase patient acceptance.



3M

PlanScan

PLANMECA



Integrated intraoral scanner for 3D digital impressions. This high-performance intraoral scanning solution can also be connected to a laptop. The system provides excellent usability and supports an ideal digital treatment workflow.

- Real-time, quick scanning with sound guidance
- Accurate results from a single indication to a full arch
- Comfort for the patient and dentist
- Open STL file format
- True dental unit integration
- Works with a laptop – easy to share
- Autoclavable and changeable tip in different sizes for impeccable infection control
- Enhanced moisture control with anti-fogging technology
- Powder-free scanning

Implant Stability

IDx



Smarter and easier than ever.

- Less guesswork. More Insight.
- Easily interpret results.
- Improved patient communication.
- Ease of access for more efficient collaborations.



OSSTELL

Osstell IDx at a glance

Monitor osseointegration	✓
Assess implant stability	✓
Store patient data and results directly in device for easy access	✓
Intuitive user interface with touch screen	✓
Easily interpret results through colour coding	✓
Clearly communicate treatment plan with patients	✓
Collaborate more effectively with colleagues by sharing files and data between platforms	✓
Analyse implant and patient data through the IDx portal	✓
Remote service and support	✓

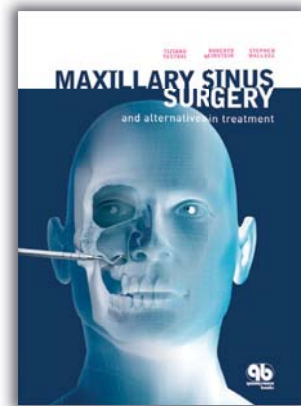
Maxillary Sinus Surgery & Alternatives in Treatment

Tiziano Testori, Massimo Del Fabbro, Roberto Weinstein, Stephen Wallace

Inspired by an idea originating at the Consensus Conference on Maxillary Sinus of the Italian Society of Oral Surgery in 2001, the authors of this book have created a new, up-to-date text that brings together the most recent scientific discoveries and innovative clinical protocols for maxillary sinus augmentation as well as possible alternatives to these techniques.

The book begins with anatomy, otorhinolaryngologic implications, and bone healing, then progresses to diagnostic, surgical, and patient-monitoring phases. An invaluable resource for both students and professional clinical experts.

Q-5120607



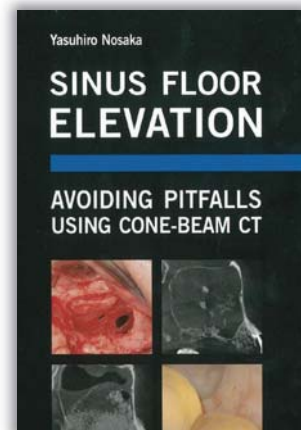
Sinus Floor Elevation

Yasuhiro Nosaka

The only way to ensure a good treatment outcome is to avoid pitfalls through careful evaluation and diagnosis. This book explores the issues that may be encountered by clinicians during sinus floor elevation and how to avoid complications. The author demonstrates the necessity of preoperative CBCT imaging for every case and discusses the efficacy and pitfalls of both the lateral window and the osteotome techniques.

The many case presentations show diverse pathologic findings, such as the treatment of maxillary sinusitis, mucous retention cysts, and apical lesions, as well as solutions for situations with difficulties due to the presence of the alveolar artery and septa. This book provides effective techniques for sinus floor elevation to guide clinicians toward a successful, complication-free outcome.

Q-5120767



Advanced Immediate Loading

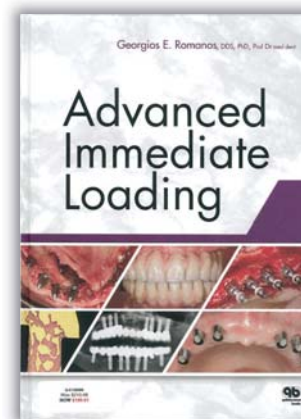
Georgios E Romanos

This expert guide presents the research and state-of-the-art protocols for advanced immediate loading of dental implants. Based on more than 15 years of clinical experience, the author demonstrates the skills and expert techniques necessary to achieve long-term success with immediate loading protocols, even when used with challenging clinical situations.

The first several chapters review the scientific and biologic basis of immediate loading, including requirements for successful clinical application, the importance of implant surface and design characteristics, and the results of significant histologic studies. The later chapters build on this knowledge, presenting research results and clinical case examples relevant to specific applications of immediate loading, including its use in the anterior mandible, edentulous arches, posterior regions, single-tooth gaps, and fresh extraction sockets.

The most advanced immediate loading procedures, including immediate implant placement in grafted bone, management of immunocompromised patients, and simultaneous sinus elevation and implant placement with immediate functional loading, are similarly explained and demonstrated through compelling case examples. Finally, the book provides valuable clinical hints to help the practitioner avoid and manage complications associated with immediate loading. A comprehensive resource for implant surgeons interested in cutting-edge protocols with proven results.

Q-5120699



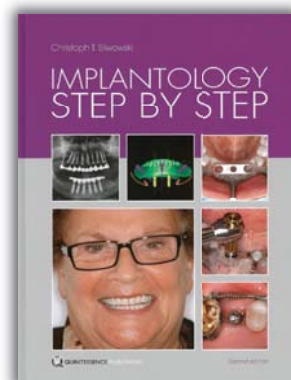
Implantology Step by Step

Christoph T Sliwowski

In this practical textbook, the author presents innovative treatment strategies for the protocols of implant dentistry that span the discipline, from simple single-tooth restoration to complex full-arch rehabilitation of edentulous arches involving sinus elevation and immediate implant placement. Delineated in the book are treatment protocols for clinical situations with different baseline conditions and levels of difficulty, including a section devoted to treating the fully edentulous patients.

New technologies, including 3D diagnosis enabled by CBCT, are analysed for their effectiveness and efficiency. In addition, important complications are discussed within the context of their causes and management; the author does not shy away from presenting examples of implant therapy with unsatisfactory results, valuing the instructive worth of problematic or controversial cases. This book provides valuable instruction and guidance to student practitioners on the most up-to-date protocols in implant dentistry.

Q-5120788



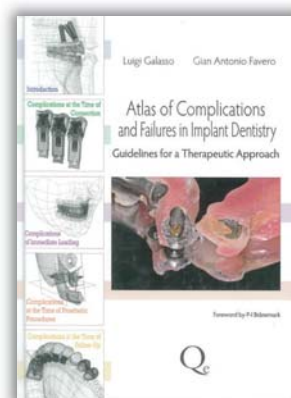
Atlas of Complications and Failures in Implant Dentistry

Luigi Galasso, Gian Antonion Favero

After nearly three decades of widespread application, implant-prosthetic therapy has been proved to be effective and safe. However, in implant treatment modalities, as in any complex therapeutic approach, complications inevitably arise in a certain percentage of cases. The authors of this clinical atlas aim to both reduce the clinical incidence of avoidable errors and provide clinicians with tested management protocols to follow when complications arise. In separate chapters, the book presents complications that can develop at different stages of treatment: implant connection, immediate loading, prosthetic phase, and follow-up.

The first part of each chapter describes specific complications in terms of their etiology, clinical signs and symptoms, diagnosis, and resolution and treatment. Then, using clinical case examples, the authors relate the stories of how these complications have occurred in real-life clinical situations and show how variables such as individual patient concerns, desires, and priorities affect the way in which they are handled. This practical reference book serves as a guide for diagnosis and treatment of complications and also, more importantly, provides a code of conduct and a philosophy for how to approach complications.

Q-5120745



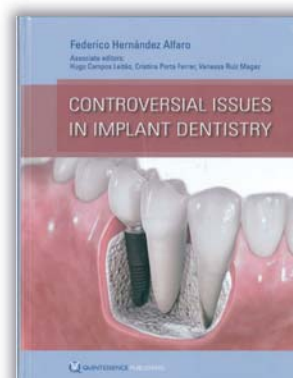
Controversial Issues in Implant Dentistry

Federico Hernandez Alfaro

Dental implantology has seen a dramatic shift in the last decade for a variety of reasons including the incorporation of 3D tools for diagnosis and treatment planning, new implant surfaces and designs, bioactive materials, tissue engineering techniques, and minimally invasive surgical procedures. The combined effect of these innovations is a new paradigm of implant dentistry that is already changing the way clinicians treat edentulous patients and improving treatment options.

Despite these advances within implantology, questions remain about many new techniques and developing technologies. This book focuses on the dynamic parts of this new paradigm that are still evolving - the controversial topics that are still subject to debate and that directly affect daily clinical practice. The author asks pressing questions and provides sound assessments.

Q-5120699



the Wand®

Computer Assisted Anaesthesia System

The state of the art digital platform for local anaesthesia, The Wand Computer Assisted Anaesthesia System builds practices by greatly improving patient satisfaction, driving loyalty, referrals and differentiating the dental practice.



FOR PRACTICES

Patient Satisfaction

- Patients are more satisfied, more loyal, and will refer friends and family based on their experience.

A new marketing opportunity

- Differentiates the dental practice and supports an innovative, high-tech image.

Less stress and more options

- Easier on the dentist – both mentally and physically.
- More options and more flexibility.

Increased productivity

- Rapid onset means you can start treatment immediately.
- A 'comfort fee' can drive revenue.

FOR PATIENTS

More comfort and less anxiety

- Significantly more comfortable than the syringe.
- Greatly reduces anxiety.
- Can eliminate collateral numbness.

More efficient use of their time

- STA enables bi-lateral mandibular treatment in one visit.
- AMSA & P-ASA allow smile-line assessment at time of treatment.
- Can go straight back to work without a numb face.

Greater satisfaction

- Patients are more satisfied with and prefer The Wand vs. the syringe.
- More confident that their dental practice has the latest technology.

HENRY SCHEIN®
DENTAL

Rely on Us™

To order telephone 0800 808 855, 8am to 5.30pm
OR freefax 0508 808 555, 24 hours www.henryschein.co.nz

Prices exclude GST and freight (E&OE). While every effort has been made to ensure their accuracy, circumstances beyond our control including variances in supply costs and foreign exchange rates may affect our customer price. Please log-in to your Henry Schein online account to confirm the current price prior to placing an order. Prices or offers are not applicable to Government or Corporate Accounts.