

# EQUIA Forte® HT



## Restorations that cross generations

### Restorations for all generations

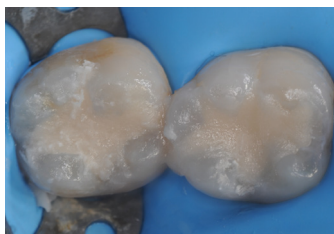
Building on the success of EQUIA Forte, the new EQUIA Forte HT is a long-term bulk fill restorative system with enhanced mechanical properties, sound marginal seal and excellent handling.<sup>1</sup> This makes EQUIA Forte HT a versatile and durable restorative solution, ideal for patients of all ages, including

EQUIA® proves its outstanding performance in class I

Survival rates for EQUIA class I restorations	
10 years – 100%	Gurgan et al. 2019 <sup>2</sup>
7 years – 100%	Basso et al. 2016 <sup>3</sup>
6 years – 100%	Turkun, Kanik 2015 <sup>4</sup>
4 years – 100%	Klinke et al. 2016 <sup>5</sup>
3 years – 100%	Diem et al. 2014 <sup>6</sup>

### A strong permanent restoration<sup>1</sup>

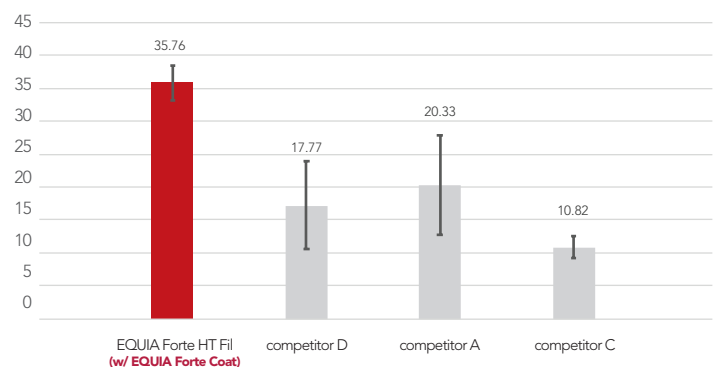
The material can be placed in bulk and is easy to pack & contour. It takes only 3'25" to complete your restorations!<sup>1</sup>



### Strong and durable<sup>1</sup>

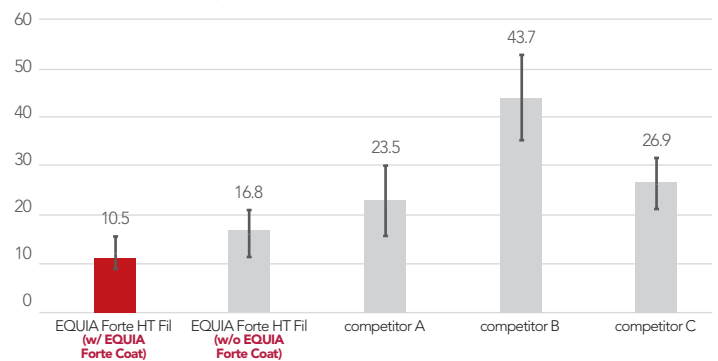
Glass hybrid systems offer the strength of the latest innovative glasses combined with the wear resistance of a filled coating. The unique synergy between the coating and the restorative material

#### Flexural strength (MPa)



Three-point bending test (ISO10477:2004). Source: University of Siena, Italy. Publication in preparation.

#### Wear resistance (µm)



Source: GC R&D, Japan, 2018. Data on file.



- Miletic I, Baraba A, Basso M, et al. Clinical Performance of a Glass-Hybrid System Compared with a Resin Composite in the Posterior Region: Results of a 2-year Multicenter Study. J Adhes Dent. 2020;22(3):235-247.
- Gurgan S et al. A randomized controlled 10 years follow-up of a glass ionomer restorative material in class I and class II cavities. J Dent. Mar;94:103175. doi: 10.1016/j.jdent.2019.07.013. Epub 2019 Jul 25.
- Basso M et al. 7 Years, multicenter, clinical evaluation on 154 permanent restorations made with a glass ionomer-based restorative system. J Dent Res 2016 95 (Spec Iss B): 0446. doi:10.13140/RG.2.1.1603.2249.
- Türkün S et al, A prospective six-year clinical study evaluating reinforced glass ionomer cements with resin coating on posterior teeth: quo vadis? Oper Dent. 2016 Nov/Dec;41(6):587-598. doi.org/10.2341/15-331-C

- Klinke T et al. Clinical performance during 48 months of two current glass ionomer restorative systems with coatings: a randomized clinical trial in the field Trials. 2016 May 8;17(1):239. doi: 10.1186/s13063-016-1339-8
- Diem VT, Tyas MJ, Ngo HC, Phuong LH, Khanh ND. The effect of a nano-filled resin coating on the 3-year clinical performance of a conventional high-viscosity glass-ionomer cement. Clinical Oral Investigations 2014; 18(3): 753-759.
- Friedl K et al, Clinical performance of a new glass ionomer-based restoration system: a retrospective cohort study Dent Mater. 2011 Oct;27(10):1031-7. doi:10.1016/j.dental.2011.07.004

# EQUIA Forte® HT



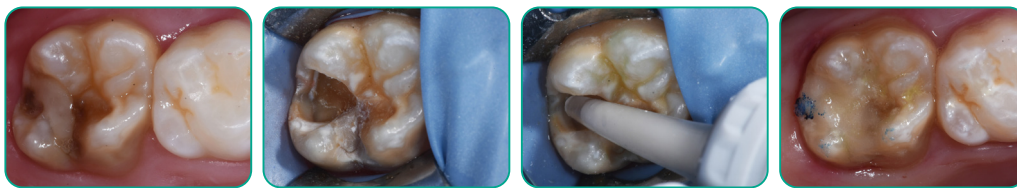
## Restorations that cross generations

**EQUIA Forte Coat** is a clear, self adhesive, light cured resin coating which works in synergy with EQUIA Forte HT. It is quick and easy to apply and features GC's latest single dispersion nanofiller and reinforced resin technologies. It completes the EQUIA Forte HT restorative system providing a

### Fast & easy placement

EQUIA Forte HT has been designed to make your daily restorative work as easy and efficient as possible. Since rubber dam placement and adhesive application are not required, the restoration can be finished quickly. It is a material that is easy to use, yet the longevity is

0'00"	0'10"	1'30"	2'30"	3'00"	3'05"	3'25"
<b>Place</b> True bulk-fill technique Convenient capsule delivery		<b>Shape</b> Prolonged working time Easy to contour Non -sticky	<b>Finish</b> Set after 2'30"	<b>Coat</b> Glossy surface without polishing with increased wear resistance and exceptional marginal	<b>Light-cure</b> Finished in just 3'25"	



Main indications for EQUIA Forte HT



**EQUIA Forte HT Fil Refill**  
Contains: 50 EQUIA Forte HT Capsules (Powder 0.4g, Liquid: 0.13g (0.10mL) per capsule).  
Shades: Assorted, A1, A2, A3, A3.5, B1, B2, B3, C4



**EQUIA Forte Coat Bottle Refill**  
Contains: One EQUIA Forte Coat (4mL) bottle.



Scan for full brochure



Since 1921  
Towards Century of Health

GC Australasia Dental Pty Ltd  
1753 Botany Road Banksmeadow  
NSW 2019 Australia

T: +61 2 9301 8200  
E: info.australasia@gc.dental  
www.gcaustralasia.com